



Newcastle Philatelic Society Newsletter VIEWS FROM NOBBYS

Newcastle Philatelic Society, P.O. Box 34, JESMOND NSW 2299

Website : www.newcastlephilatelicsociety.org.au

AUGUST, 2015 : Newsletter No. 174 : EDITOR: Ron Davis

WHAT'S ON IN YOUR SOCIETY

THE NEWCASTLE PHILATELIC SOCIETY MEETS 7.30pm SECOND THURSDAY of EACH MONTH
MAYFIELD EX-SERVICES CLUB, 2nd FLOOR MEETING ROOM, HANBURY STREET , MAYFIELD AND
EACH THIRD WEDNESDAY AT 10.00 a.m. AT STUDIO 48, 48 MACKIE AVENUE, NEW LAMBTON.

VISITORS ALWAYS WELCOME

DATES	DETAILS
Thurs 13 Aug 2015	A.G.M., ANNUAL COMPETITION and AWARDS NIGHT
Sun 16 Aug 2015	Junior Stamp Activities Meeting, at WALLSEND STAMP FAIR , 11 a.m
Wed 19 Aug 2015	Newcastle Daytime Meeting : 10 am, 48 Mackie Avenue, New Lambton, Display by Bob Glendenning– “BRITISH AFRICA, Part 3”
Thur 10 Sept 2015	Display by Ross Wood (WA) “AUSTRALIA-LIVING TOGETHER, THE STAMPS & USAGE”
Wed 16 Sept 2015	Newcastle Daytime Meeting : 10 am, 48 Mackie Avenue, New Lambton, Display by Ron Davis– “SOME MORE HARDLY-EVER-HEARD OF COUNTRIES”
Sun 20 Sept 2015	Junior Stamp Activities Meeting, at WALLSEND STAMP FAIR , 11 a.m
Thur 24 Sept 2015	STAMP AUCTION NIGHT (details, phone Don Catterall 02 - 4943 5639)
Thur 8 Oct 2015	Display by Paul Sorm (Sydney) “JULIUS BLAU ON TOUR WITH 4711”
Sun 18 Oct 2015	Junior Stamp Activities Meeting, at WALLSEND STAMP FAIR , 11 a.m
Wed 21 Oct 2015	Newcastle Daytime Meeting : 10 am, 48 Mackie Avenue, New Lambton, Displays by Bruce Chadderton – “TASTE of KOREA”
Thurs 12 Nov 2015	Display by Geoff Kellow “SIERRA LEONE KING GEORGE VI, THE STAMPS AND USAGE”
Sun 15 Nov 2015	Junior Stamp Activities Meeting, at WALLSEND STAMP FAIR , 11 a.m
Wed 18 Nov 2015	Newcastle Daytime Meeting : 10 am, 48 Mackie Avenue, New Lambton, Display by Bernard Doherty – “SOUTH AFRICAN POSTAGE DUES”
Mon 14 Dec 2015	VISIT TO MAITLAND STAMP CLUB 7.30 p.m.
Thurs 10 Dec 2015	Display by David Collyer (Sydney) “SOUTH AFRICA ARCHITECTURE SERIES, STAMPS & USAGE”
	NO Newcastle Daytime Meeting
Sun 20 Dec 2015	Junior Stamp Activities Meeting, at WALLSEND STAMP FAIR , 11 a.m

SWAP AND SALE NIGHT REPORT, 20th JULY 2015

Despite the winter chill this was a Good Night with a room full of people and lots of interesting material to look at and plenty of good buys to be had.

Nine members took tables and another twenty one came along to either buy something or to simply enjoy the philatelic fellowship.

We also had nine visitors on this occasion and a couple of these were newcomers and perhaps prospective members. We are always happy to swell our ranks!

This event will be on again in July next year, so put it on your calendar and don't forget that our next Society Auction will be held pretty soon on the 24th of September. Hope to see you there.

Don Catterall, Operations Convenor.

"The difference between genius and stupidity is that genius has its limits." ~ Albert Einstein

THE PRESIDENT'S REPORT, 2014 - 2015

Another Society year has ended, and with it my two year term as President. I have enjoyed the privilege, which seems to have gone by very quickly.

I would like to take this opportunity to thank all the members of the Society's Committee for their continuing work and support, in the operation and activities of our Society; and also all the members for their attendance and interest in the Society's evening and daytime meetings, our displays and several stamp auctions and sales.

Particular thanks to our Secretary, John Moore, for the time and effort he puts into the ongoing running of the Society, and this year, the extra task of organising our NORPEX 2015, National One Frame Exhibition, to be held over the coming October 31 - November 1 weekend. Particular thanks also to Don Rutherford and Bernard Doherty in their roles as Treasurer and support Secretary.

Although much of the Society's activities during the year have been detailed in the Secretary's Annual Report, I would like to especially mention several of these:

Our monthly evening meetings continue to be well attended, with six of the displays by our own members, while three visitor display evenings gave us the opportunity to view further great material. Congratulations to Greg Laidler on his being judged winner of the Doron Trophy this year, for his display on "South Australia Centenary" material.

The daytime meetings continue to attract up to fifteen members, with ten of this year's displays being presented by locals. The less formal style of these meetings, leads to more interesting discussion and comment.

Congratulations also to the eight participants in this year's Annual Competition, on the range and quality of their entries. The winning entry by John Pugsley, for his "Boer War – 1899-1902 - Concentration Camp and Burgher Camp Mail" display, was well deserved.

We have continued to give public displays to promote philately and further interest in our Society. One further display was given at the Belmont Citi Centre; and I would like to thank those members who provided the fourteen frames of display material and assisted in the setting up and manning of this display. The NORPEX 2015 display, which will include a number of our Society member's entries, should further promote local philately.

And finally, a warm welcome to your new President, Tony Walker.

Ed Burnard, President 2014-2015
13 August 2015

THE SECRETARY'S SNIPPETS, August 2015

An important event on the calendar is NORPEX 2015, a National One Frame Stamp Exhibition to be held in the Wallsend Pioneer Hall, corner of Cowper and Low Streets, Wallsend on 31 October and 1 November.

The success or other wise of any exhibition is participation from our Society members, members of other clubs and societies, as well as the general public.

To make it a successful exhibition, we seek volunteers to help during the exhibition, particularly on Friday 30th from 9.00am to help set up the tables in the hall and mount the exhibits in the frames, and again on the Sunday from 3.00pm to dismount the exhibits as well as help in putting the frames back onto a trailer, and restacking the tables and chairs in an adjacent storage room. Then there are a number of things both big and small, like making a cup tea or coffee for the traders, going to Officeworks on the Saturday afternoon to print the Awards list and stapling it together, maybe picking up one of our interstate judges from the airport or railway station, or spending some time with out of town visitors making them welcome and showing them a bit of this great city. Those that can help please advise one of our committee members.

One of the highlights of any exhibition is the Awards Dinner [Palmares]. Those wanting to attend this dinner are urged to make an early booking, as numbers are strictly limited. Price \$50 per person, which includes a 3 course meal, some table refreshments, and access to tea and coffee making facilities

Lastly as it costs a lot of money to run an exhibition, the NORPEX committee have on sale a number of souvenir items which are advertised elsewhere in this Newsletter. I urge you to support NORPEX and your Society by purchasing some of these items.

- John Moore, Secretary -

*** In November 1986, 200 birdwatchers from all over Britain gathered in the Scilly Isles to see the arrival of an extremely rare grey-cheeked thrush. During the long wait they discussed the bird's North African habitat, its exquisite colouring and the precise detail of its unusually melodious call.

Peering through binoculars, they saw the priceless bird fly in, amidst exclamations regarding its beauty. As soon as it landed on the campsite at St Mary's Garrison Mrs S. Burrows's cat, Muffin, dashed out, snatched the thrush in its mouth, disappeared into a bush and brought the birdwatching session to a close.

*** *A starfish can be cut up into sizeable chunks and each piece will grow into a completely whole starfish..*



BRIDGES AND CASTLES, a display by RON DAVIS, Thursday 14th May 2015.

"It all started with a boat trip to watch the start of the Sydney Hobart Yacht Race when I was at University in 1959 – my cousin took me around to Castle Cove, and to my amazement, there WAS a castle in Sydney – and I was hooked. I'm not sure when the "Bridges" came into my interest – probably because you need a bridge to get over a castle's moat!" Most of this display was on postcards, although BOTH bridges and castles widely occur on stamps, too, such as the recent set of ten bridges issued by Great Britain issued on 5th March 2015.



The oldest of these bridges, Tarr Steps (15th-16th Century) in Exmoor National Park, is of clapper bridge construction, comprising large slabs of gritstone placed flat on broad low piers made from blocks of stone. Row Bridge (mid-18th Century) is a stone packhorse bridge, built with low sides so that they didn't interfere with the panniers carried by the horses, which crossed in single file. Pulteney Bridge, in Bath, completed by 1774, is said to be the United Kingdom's finest example of an "inhabited" bridge, containing shops originally with accommodation above. Craigellachie Bridge, in Scotland, completed in 1841 and spanning 46 metres, was constructed in cast iron, which was revolutionary at the time. Other bridges shown are the Menai Suspension Bridge (Wales, 1826), the world's first great suspension bridge; the High Level Bridge (Newcastle-upon-Tyne), up to 40 metres high; the Royal Border Bridge (Berwick-upon-Tweed, 1847), a railway bridge with 28 semi-circular arches each spanning 18 metres; the unusual Tees Transporter Bridge (Middlesbrough, 1911), with a suspended gondola which conveys people and cars across the river in two minutes; the Humber Bridge (1981, spanning 1410 metres), formerly the longest single-span suspension bridge in the world; and the Peace Bridge, in northern Ireland, completed in 2011, an innovative design to carry pedestrians and cyclists across the Foyle River.

Castles occur in almost every country of the world – both defensive castles and residential castles. Great Britain and France are arguably the most prolific, although the cost of repairing castles which have been devastated in warfare and maintaining them is so high that most are still in ruins. Most are built in stone or brick, but castles in Africa and the Middle East can have very thick mud with straw walls, sometimes 12 feet thick. Ron's display showed plans and details of various British castles, postcards of many of England's ruins, and castles in Turkey, Greece, Italy, France, Russia, Montenegro, Finland, Denmark, the U.S.A., and Eire. Interesting !!



SOUTH AUSTRALIAN POSTMARKS – a display by MARK SAXBY, Thurs 11th June 2015



Mark started collecting South Australia (but not the Northern Territory) in 1982. But this collection was to be POST OFFICES, not postmarks. He attempted to get a photo of each South Australian Post Office, together with a postmark on piece, or a First Day Cover with a postmark.

1850 saw the first post offices in South Australia – no FDC's then, it was all mail. Nepean Bay, Glenelg, and Adelaide were the first post offices, and these eventually grew to over 800 postmark types, from 584 postal stations.

From 1837 – 1901 was the Basic Colonial Period, and 1901 – 2015 the Commonwealth Period. On 10th April 1837, the first official postal record is Thomas Gilbert, in his hut. In 1851, Adelaide P.O. started. You can tell the size of a town by the type of Office there – official P.O., non-official, licensed P.O., agencies, or railway post offices (in 1910 these were moved or closed – the Railways didn't want to pay for the Postmaster!).

By 1880, there were telegraph and public phone offices as well as post offices. In those days, postmasters at Semi-Official post offices were paid £250-350 per year (depending upon the size), and the smallest - Allowed Offices - were paid £12 per year, and had to provide their own lights, furniture, and accommodation ! Receiving Offices, handling sealed mail bags, registration and postal notes, received a maximum of £600 per year, a Free Bag Service was 3 or 4 residences close to a post office, and Telegraph Offices serviced telegraph and telephone only, and “keepers” were supplied with £1 worth of stamps.

The Northern Territory didn't exist in the early days – it was included in South Australia – so Mark displayed a Port Darwin S.A. 1907 (later named Darwin) with a picture of the post office there, and Chain of Ponds opened in 1848 and closed in 1860.

He also showed some temporary post offices in Adelaide – Adelaide Grand Prix – and several Travelling Post Offices, and 6 or so Railway Express covers. The contractors building the weirs on the Murray River were catered for – five post offices were built – Lock 2, 3, 4, 5 and 6 – each lasted only 2½ years and were then moved on. Australia's ONLY underground Post Office at Coober Pedy was included, as were the unusually named Offices at Duck Creek, Government Wells (1870-1875), Mount Monster (249 km east of Adelaide - became Keith), Thistle Beds, and Marmon Jabuk (183 km east of Adelaide). Each post office was shown with a distance from Adelaide, so Port Darwin was 3027 km from Adelaide – on the other side of the Continent !

Koorunga (1847-1849) became Burra Burra, and was renamed Burra in December 1939. Aeropex 1988 in Adelaide was included, and other bits of information were revealed – there were 3283 articles of mail for the Adelaide Zoo Centenary, Bloods Creek post office was in a shop, and Stone Hut was in a store, and Post Codes started on 7th September 1967.

A very interesting display !!

*** BREAKABLE STAMPS ??

Austrian Post has recently issued a stamp printed on porcelain. That sounds a bit risky, but apparently it is unbreakable. Viennese porcelain manufacturer, Augarten, have screen printed the design on porcelain which has been baked to 960 degrees Celcius for 24 hours then glazed and hardened to make it unbreakable. 150,000 have been produced. The design is based on Augarten's Viennese Rose pattern which was introduced in 1924. Augarten is the second oldest porcelain manufacturer in Europe, having been established in 1718.



DESCENT INTO THE ABYSS –

- the display by **BRUCE CHADDERTON (Bathurst), Thursday 9th July 2015**

This rather strange title revealed a display on HOLOCAUST MAIL – the impact on Jewish life arising from Nazi rule in Europe, 1933 to 1945.

Bruce started the display in 1933, with the establishment of concentration camps, and showed relatively rare material from 1933 to 1938 – the establishment of the Gestapo, immigration, and invasion of Europe by the Germans. He touched on when the German SS took charity stamps and used them during the war for fund-raising activities (1936-41), and continued through to post-WW2, the Final Solution operation mail, the liberation of the concentration and “death” camps, and the choices made by people afterwards.



The display was in 10 sections, and primarily consisted of letters, postcards, covers, and stamps from relevant covers.

PART 1 – was the FIRST YEARS OF NAZI RULE 1933-1938, and showed the attempt to develop an Aryan (German) super race. Eight stamps were issued for the 1936 Olympic Games in Berlin. A concentration

camp was set up in Austria – Mauthausen – and 40,000 Jews were to die there.

PART 2 – dealt with the lead-up to the War – 1938-39 – and the KRISTALLNACHT (the “Night of the Broken Glass”, 9th November 1938), a pogrom – a series of coordinated deadly attacks on the Jewish population..

PART 3 – the INVASION OF EUROPE, September 1939-1941. Two-thirds of Europe’s Jews lived in Poland and Russia. Poland was invaded 1st September 1939, and Jewish assets were confiscated (Aryanised). Jews were eradicated from Germany, being sent abroad. Emigration was the last chance for their survival.

PART 4 – the EARLY DAYS OF OCCUPATION. Concentration camps were set up in various countries – Buchenwald, Sachsenhausen, Dachau, Oranienburg, and Auschwitz 1.

PART 5 – included PROPAGANDA from the Early Days of Occupation. Decrees were enacted for forced labour by the Jews – for instance, clearing snow in Prague on 24/25th January. Jewish names of towns were eradicated by renaming the towns (just as Australia did with German-named towns in WWI).

PART 6 – “THEY DIDN’T ACT ALONE” (1939-1945). There were over 30 ghettos, including Litzmann Stadt in Germany, Dachau in Poland, Theresienstadt in Czechoslovakia, and Bergen-Belsen, Buchenwald, Oranienburg and Sachsenhausen.

PART 7 – THE DESPAIR OF THE GHETTO. In the Polish death camps – Auschwitz 2, Beltzec, Chelmo, Majdanek, Sobibor and Treblinka, some Jews were kept alive to run those camps, while the rest were killed on arrival. In the Warsaw ghetto, there was a revolt by the inmates in 1943 from 19th April to 16th May.

PART 8 – THE FINAL SOLUTION ENACTED. In the Ukrainian death camp of Maly Trostinets, 65,000 Jews and 140,000 other prisoners were marched to the side of deep pits and shot to death.

PART 9 – THE LAST DAYS OF THE REICH (1944-45). The ghettos were relieved by American, British, and Russian troops. The inmates were mostly starving, and in very poor condition.

PART 10 – AFTERWARDS, AND NEW BEGINNINGS (1945 - on). The PRE-war Jewish population in Europe was 8,301,000. The POST-war population was 2,287,000, so more than six million Jews had been “exterminated” by the Nazi regime – the survival rate was merely 28%. The Jewish country of Israel was formed in the former Palestine, while other Jewish enclaves emerged in Europe and Western Russia.

The postal service was in many ways chaotic following the cessation of hostilities. Various overprints were applied to remaining stocks of the Adolph Hitler definitive stamps, but they were all withdrawn on 8 August 1945. Some towns and cities managed to produce something more than just a simple overprint or primitive label, such as the town of Finsterwalde, 110 km south-east of Berlin..



***** No wonder teenagers become confused. While half the parents are telling them to find themselves, the other half are telling them to get lost !**

***** A SYNONYM is a word you use when you can’t spell the other one**

NORPEX 2015 SOUVENIRS

The Organising Committee is preparing number of souvenir items to support the running of NORPEX 2015 National One Frame Exhibition to be held 31 October/1 November, Venue Pioneer Hall, Cowper Street, Wallsend.

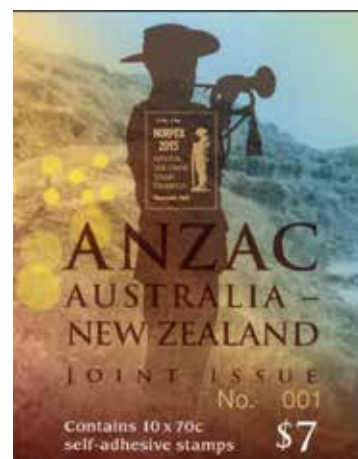
Item 1.



Overprinted FIRST VICTORIA CROSS mini-sheet. The First Victoria Cross commemorative mini sheet depicting a 70 cent VC stamp in green and the \$5 stamp in mauve. NORPEX LOGO overprinted in gold. Numbered 51-100*. Priced @ \$15 each plus postage.

Item 2.

\$7.00 ANZAC Joint Issue Booklet Overprinted with the NORPEX LOGO and numbered 51-100*. Priced @ \$15 each plus postage.



Item 3. SUPPORTERS PACK



The Supporters Pack (\$50 each plus postage) includes the APF Replica Card No. 21 - featuring the 1935, 2d and 1/- Anzac stamps issued for the 20th Anniversary of the ANZAC Landing at Gallipoli overprinted with the NORPEX LOGO numbered 1*-50

One Victoria Cross Centenary Minisheet Overprint numbered 1*-50

One ANZAC Joint Issue Booklet Overprint numbered 1*-50.

One each of the P Stamps depicting WWI service medals

\$5 discount of one Awards Dinner

*Items from pack number 1 to be auctioned during the awards dinner.



Item 4.

P Stamp sheets depict the WWI Service Medal, Victory Medal and 1914/5 Star.*Tab on left side dependent on what is available from Australia Post.

100 souvenir envelopes with a P-Stamp affixed and cancelled with a suitable date stamp [design not yet available]
Prices to be advised when the base postage rate is known

Item 5.

Complete sheets of P-stamps will be available. Expressions of interest are sought so requirements will be known before orders are placed. A discount will apply on purchases of all three sheets. Cost of these items will depend on the base postal rate current on 31 October 2015.

Postage and packing, Items 1 and 2 at current postage rates \$2.00. Item 3 per Pack \$2.00.

Commemorative envelopes up to 4 per package \$2.00.

Item 5 at current postage rates \$3.00; Registration at the rate current at the time.

Orders to NORPEX 2015, PO Box 34, Jesmond 2299

Email: moore.john@optusnet.com.au

Cheques [payable to Newcastle Philatelic Society], Direct Debit, Credit Card and cash accepted.

THE NEWCASTLE DAYTIME MEETINGS,

**at Studio 48, 48 Mackie Avenue, New Lambton,
at 10 a.m. on the THIRD Wednesday of each month (except December).**

GERMAN OCCUPATION OF GUERNSEY — Tony Walker, Wednesday 20 May 2015

“There are only 3 stamps issued by Guernsey, a green ½d., a scarlet 1d., and a 2½d blue,” Tony Walker said. “But I DO have more pages than that,” he added.

The Islanders’ war started with Heinkel bombers, a reconnaissance plane, and then transports with troops on 30th June 1940. Hitler’s idea was to fortify the Channel Islands preparatory to an assault on England, but then he turned his attention to Russia and the Eastern Front.. Nevertheless massive defensive emplacements were built, with batteries of big guns, and 40,000 German soldiers. Meanwhile, there was passive resistance from the population. In 1942-43, officers from World War I, Jews, etc. were deported to the Isle of Man. And in 1942, the population’s radios were confiscated. The “Vega” Red Cross ship came with supplies which were desperately needed. By 1945, because German submarines had stopped supply ships arriving at Guernsey, the Germans (and the population) were in a desperate state regarding supplies. On liberation in 1945, the 40,000 German troops were sent to P.O.W. camps in the United Kingdom, and the Islanders were more about getting back together again – and again welcoming supply ships.



Tony’s display had many telegrams from and to the population, local covers, AND multiples of the three stamps.

SIX PAGES FROM MEMBERS’ COLLECTIONS – Wednesday 17th June 2015

Of the 12 members attending the meeting, 10 of them brought along a variety of displays.

ROGER EGGLETON – the last six pages of his SCAVENGER HUNT entry : a Wagner opera, Windsor Castle, a Spanner, a Scuba Diver, and a Snow Scene. Skiing was introduced into Australia in 1861 by Norwegian miners searching for gold in the alpine regions.

RON DAVIS – A WORLD OF SUPERLATIVES : the biggest, smallest, widest, narrowest, highest, northernmost, etc..

JIM MacDOUGALL – CANADIAN COVERS : Special Delivery, Registered, Return to Sender, ‘Sept Iles’, etc.

JOHN HILL – 4000 YEARS DEVELOPMENT IN COMMUNICATIONS : a Babylonian clay tablet (2000 B.C.), material from 7th century and 14th century A.D., the world’s first paper 1392, a Great Britain 1d. black stamp 1840, Barrier Island Pigeon Post 1897, and the world’s first airmail flight 1911. He also had a “shirt letter”.

ANNA HILL – FROM SUMERIAN COINS TO ROMAN CIVILISATION : the world’s first money were Sumerian coin beads from 7th Century B.C. (previously it was barter); imitation Roman coins – Hadrian 117 A.D., Valerius 275 A.D..

SANDRA BAKER – A RECENT TRIP TO VIETNAM : stamps of various buildings and ceramics and How Long Bay.

GORDON SUTHERLAND – UNUSUAL SHAPED STAMPS : triangles, hexagons, octagons, circles, long and short.

KEITH LAVERICK - 150th ANNIVERSARY OF THE FIRST G.B. 1d. BLACK, 1990 : all the British Post Office issues in 7½ pages. Most of the stamps depicted Queen Victoria and Queen Elizabeth II.

DON CATTERALL – LIGHTHOUSES OF THE WORLD on stamps, 2001.

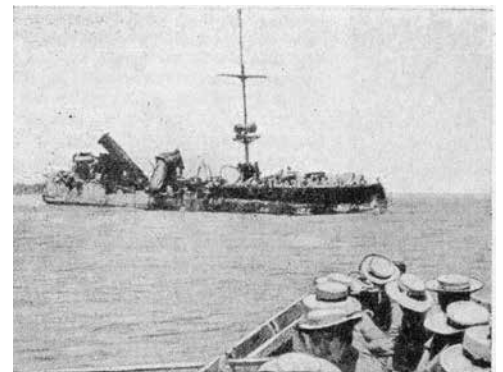
DON RUTHERFORD – U.S.A. VARIETIES : Parcel post, USS Washington, Underpaid, Printed Matter, and George Washington.

AUSTRALIAN POSTS IN WORLD WAR I – Paul Storm, Wednesday 15th July 2015

Paul came up from Sydney, and showed and described a wide variety of unusual World War I material – a Caroline Islands cover from 1914; a Herbertshoe postcard from New Guinea showing “where the fighting took place”; covers from Shepherds Hotel in Cairo – an army base in the “southern corridor” – which had its own postmark; a child’s postcard from the Grand Continental Hotel in Cairo, and an unusual cover from Mena House Hotel Camp, Battalion Train, 1st Australian Division Field Post Office.

He had a cigarette packet posted from a Field P.O., addressed to a lady near Cooma, which just showed “I am alive”. He had some trinkets – wax matches, and a bracelet with rectangular “beads” showing enamelled scenes in Cairo, and a Christmas card from Wakefield in the U.K. to the Trial Bay Prisoner of War camp, NSW. A letter to the German Concentration Camp in Berrima NSW in 1916 was very rare.

And one of very few letters from a survivor in Malta of the “Emden” sinking was on display. The Captain of the “Emden” – whose aim was to disrupt Allied shipping – took over 30 ships, but repatriated all crews and passengers onto one ship, and sank the rest of the ships with their cargoes. And Paul ended his display with a 1996 newspaper article about Holdsworthy Camp NSW in those early days.



Emden. The German light cruiser when she had been driven ashore on North Keeling, one of the Cocos Islands, after her battle with the Australian cruiser Sydney

***** Sometimes the message has to be blunt so you will see the point !**

AUCTION NIGHT - THURSDAY, MAY 22nd 2014

For a change, the weather-Gods smiled and the roll up was excellent with over 50 in attendance and 45 taking bidding cards.

There were 397 lots on offer from 22 vendors, and a record high of 222 lots were sold, bringing a 56% selling rate. The vendors must surely have been happy. A total sales figure of \$2,039 was reached, and this too is a record for our auctions.

To mention a few of the higher sales : the top price of \$60 was paid for an album containing well over a thousand KGV Penny Reds. Next came a set of Northern Territory Revenues which went for \$55.

\$50 was the price paid for the next two lots - one being a lovely collection of the stamps of Grenada (a great bargain) and the other, those of Aitutaki and the Cook Islands.

\$42 was paid for an enormous box of all sorts of philately (a members spring clean) with many a prize within and from the same vendor, a large box of ancient stockbooks that fetched \$32. An unusual usage early Registered envelope attracted some attention and went for \$38 to a knowledgeable buyer whilst \$32 was paid for some very nice pages of Newfoundland stamps.

Very popular on this night were bags of used Australian stamps with quite a few bidders chasing these, and finally Scandinavian sets sold well, as did lots of pages taken from world stock books.

Thanks to all involved for such a really good night. See you again on 24th September.

- Don Catterall, Auction Convenor -

NINE IMPORTANT FACTS TO REMEMBER AS WE GROW OLDER

9. Death is the number one killer in the world.
8. Life is sexually transmitted.
7. Good health is merely the slowest possible rate at which one can die.
6. Men have 2 motivations : hunger and hanky panky, and they can't tell them apart. If you see a gleam in his eyes, make him a sandwich.
5. Give a person a fish and you feed them for a day. Teach a person to use the Internet and they won't bother you for weeks, months, maybe years.
4. Health nuts are going to feel stupid someday, lying in the hospital, dying of nothing.
3. All of us could take a lesson from the weather. It pays no attention to criticism.
2. In the 60's, people took acid to make the world weird. Now the world is weird, and people take Prozac to make it normal.
1. Life is like a jar of jalapeno peppers. What you do today might burn your backside tomorrow.

*** *Correction does much, but encouragement does more . - Goethe.*

*** *The person who knows HOW should always have a job. But the person who knows WHY will be his boss.*

*** At the Post office, I noticed a young woman hurriedly sticking stamps on a registered letter. When she handed it to the counter clerk, he told her that she had attached too much postage. "Oh, dear," she said anxiously, "I hope it doesn't go further than where it's been addressed to !"



THAT'S A BIT WEIRD !!



"Why is it you never look regal on Monday mornings !"