

Philatelic Exhibitions Held in Newcastle

[Extracts from History of Newcastle Philatelic Society – author Bernard Doherty FAP]

The Newcastle Philatelic Society has staged a number of Philatelic Exhibitions, although most up to 1987 were non-competitive. The first was held at the A.H. & I. Show, at its Broadmeadow grounds in 1923, with a second, at the same venue in 1924. This showing created a lot of interest in the local paper and philatelic journals, with one exhibit being an outline history of World War I, then known as the Great War. Other exhibitions were held in Stores (Newcastle Co-operative Store, David Jones), Banks (Newcastle Commonwealth Savings bank, and the National Bank), Building Societies, and several were held at the Newcastle City Hall in conjunction with Stamp and Coin Fairs, dealers being present.

However, there were seven major Philatelic Exhibitions.

1934 Exhibition

A non-competitive Stamp Exhibition was held in the Civic Wintergarden (later the Civic Playhouse), from November 27 to December 1, 1934, in conjunction with the Newcastle Tourist and Publicity Bureau's Poster and Travel Exhibition to celebrate the 75th Anniversary of the Incorporation of Newcastle. Local members did yeomen service in getting the venture underway, arranging exhibits, and attending the various sessions for the purpose of answering visitors' inquiries and giving information to those attending the Exhibition.

Special souvenir envelopes printed for the Society were available at the Exhibition. A receiving post office operated in the exhibition to process mail matter and supply stamps, however only the normal Newcastle Post Office circular datestamp was used to cancel processed mail.

Great publicity was given to stamp collecting as the exhibition was opened by the Mayor, Alderman Kilgour and it was well written up in both local newspapers. The public were given the opportunity of seeing the way in which stamp collectors mounted, arranged and annotated their collections.



In addition to local exhibits, prize winning exhibits from the Melbourne Centenary Exhibition were on display, including those of Mr. G.H. Winsor (Newcastle) Mr. R. Winsor (Newcastle) Mr. F.W. Hill (Sydney), Mr. F. Bolton (Sydney) and Mr. C. Fawcett (Melbourne).

The leading Sydney stamp dealer, Mr Alfred C. Campe (founder of the firm bearing his name in Sydney) said he considered it to be a better philatelic display, in variety of material shown, though not in value, than the VICVI (Victorian Centenary) Exhibition in Melbourne. This was remarkable in that the Melbourne display included world-wide exhibits, whereas the Newcastle exhibitors were only from Newcastle, Maitland and Sydney.

1938 150TH ANNIVERSARY OF THE FIRST EUROPEAN SETTLERS IN AUSTRALIA

The year 1938 was the 150th Anniversary of the first European settlers in Australia and in connection with this, the Newcastle Division of the Anniversary Committee held a combined exhibition at Tyrrell Hall (Newcastle), the Newcastle Philatelic Society being one of the four Societies participating. Eight hundred sheets of stamps were displayed.

A special 30mm circular date-stamp was provided for use at the Exhibition Post Office. The datestamp was inscribed: NEWCASTLE PHILATELIC EXHIBITION / N.S.W., with the date in the centre. Blank registration labels were provided which were handstamped in purple with a 65mm straight line NEWCASTLE PHILATELIC EXHIBITION



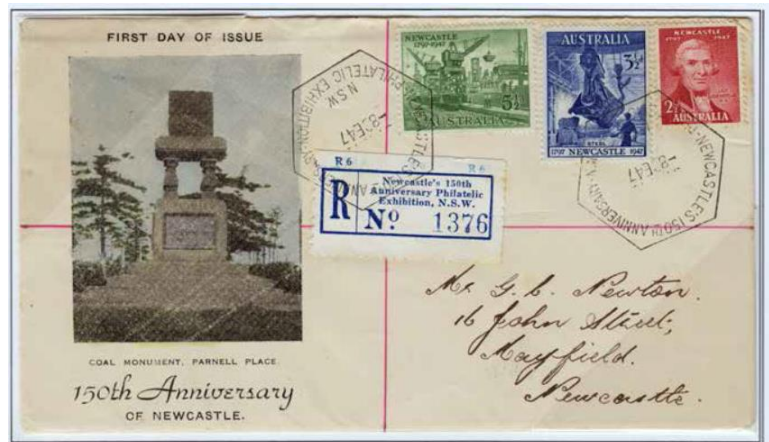
The commemorative envelope which was arranged by Mr. Miller, featured a view of Nobby's Head, in blue, plus the Sesqui-centenary logo and appropriate wording.

The Exhibition took place from February 14 to 23, 1938.

1947 - NEWCASTLE'S 150TH ANNIVERSARY PHILATELIC EXHIBITION

In 1947 the Newcastle Philatelic Society, together with the local Historical Society, held a combined Exhibition, at Tyrrell Hall. The same day as the Exhibition opened, a set of three stamps, with values of 2½d, 3½d and 5½d was issued. A special postmark was used, which was hexagonal in shape, 31mm wide, with the words; NEWCASTLE'S 150TH ANNIVERSARY / PHILATELIC EXHIBITION / 8 SE 47/ N.S.W.

Many people had covers cancelled with this special postmark for the first day of issue of the stamps. Official records show there were 6,563 registered and 1,400 ordinary covers processed. For the registered items only 2,000, specially printed R6 registration labels had been provided. When these were exhausted 3,000 R6 blank labels were used with a two-line rubber stamp inscribed 150TH ANNIVERSARY/ PHILATELIC EXHIBITION, N.S.W. applied in purple. Regular Newcastle R6 labels were also used similarly overprinted. Meaning, three variants of registration labels were used. With so many covers needing cancelling at the Exhibition, it took three days of continuous effort for the limited staff, aided by Newcastle Philatelic Society members, for all the mail to be cancelled! The Exhibition was officially opened by His Excellency, the Governor of New South Wales, Lieutenant-General J. Northcott, C.B., M.V.O., on Wednesday, September 10, 1947, although it had been open to the public from Monday September 8 and ran until September 18, 1947.



NEWCASTLE 1947 EXHIBITION REGISTRATION LABELS

The following article appeared in the Australian Stamp Monthly;

“When the decision to hold an exhibition was made, arrangements were made with the Postal Department to supply 2,000 specially printed R6 registration labels with the inscription “Newcastle’s 150th Anniversary Philatelic Exhibition, N.S.W.” and other equipment. Soon after the announcement that a Post Office would be opened in the Exhibition appeared in the August “A.S.M.” we were deluged with requests for cover service and it was early seen that 2,000 registration labels would be inadequate and the number was increased to 5,000. But the extras could not be prepared in time and 3,000 R6 labels and a rubber stamp were supplied.

These registration labels were in pads of 250 numbered 001 to 250. The initial supply cut out early on the first day. A few additional blocks of labels were requisitioned from suburban Post Offices and Newcastle N.S.W. regulars were also requisitioned, the latter types were overprinted with the rubber stamp. Thus three types were used and F.V. Thompson’s cover shows the first type provisional registration label No. 001 of which 12 and probably 16 No. 001’s were used. The original pre-printed types were numbered 0001 to 2000. The second provisionals were taken from a block of 10,000, I believe but was unable to verify to date. In the October 1947 “A.S.M.” it was correctly reported that No. 3 original pre-printed registration label was addressed to His Excellency the Governor, Sir John Northcott, c/o Philatelic Exhibition. It was handed to him by me, after he officially opened the Exhibition on September 12. No. 4 label is on a cover enclosed with imprint blocks and autographed by His Excellency. Other early numbers were reserved (as Mr Thompson suggested) for special recipients and members of Newcastle Philatelic Society. (Covers with the first specially printed registration labels went to H.M. the King, H.R.H. Princess Elizabeth and His Excellency the Governor of NSW (numbers 1 to 3).

A special Post Office was opened at the Newcastle Industrial Fair, September 6 to 13, 1947.

A special canceller with the wording “Newcastle Industrial Fair” was used and blank R6 labels which were rubber stamped, Newcastle Industrial Fair, were provided for registered articles



Official figures supplied by the Post Office were: Philatelic Exhibition Post Office Registered Articles 7,963; First Day Covers 9,026; Unregistered - thousands (no check); Stamps sold £252-1-8d. Industrial Fair Post Office - First Day Covers - 798; Registered articles - 298; Stamps sold - £56-13-4d.

Newcastle Post Office: - First day Covers - 7,760. The Exhibition Post Office was open till 10.00pm the first day, and the mail received that day was in such volume that cancellation was not completed until 5.00pm on the third day. A shoal of inquiries regarding late FDC's, began to flow in on Wednesday and continued until the close of the exhibition. It is hoped that the recipients of late mail will understand the reason for the delay, and we say the Post Office did a good job under difficult circumstances. It is regretted that all requests for specially arranged stamps and cancellations could not be complied with by the small committee handling the requests, which were of avalanche proportions.

NORPEX '87

"Our Town" Norpex 1987, a State level philatelic exhibition, was held in the Merewether High School multi-function hall over the long weekend, October 3 and 4, 1987.

105 exhibitors submitted 176 competitive frames, with 12 entries being received in the literature section.

The Court of Honour was composed of 31 frames of invited exhibits from Judges supplemented by 3 frames of the Vickery Collection, from the Mint and Barracks Museum. Also on display in this area were the original artwork and the uncut colour trials and the final printed sheets, of the Bicentennial minisheet prepared for the Exhibition.

Nine dealers were in attendance together with an Australia Post annexe, Stamp News, Newcastle Historical and Philatelic Societies, Philas and Sydrex 88.

Philatelic Society. **The Official Opening:** The Exhibition was officially opened by Newcastle Lord Mayor John McNaughton and Society President Marie Simkus.

Presentation of Awards Dinner on the Saturday evening was held at the 'Princeton' in Hamilton.

It was a well presented and interesting exhibition, with very high quality exhibits. The friendly and professional manner in which the exhibition was organised and conducted was a credit to the members of Newcastle Philatelic Society.

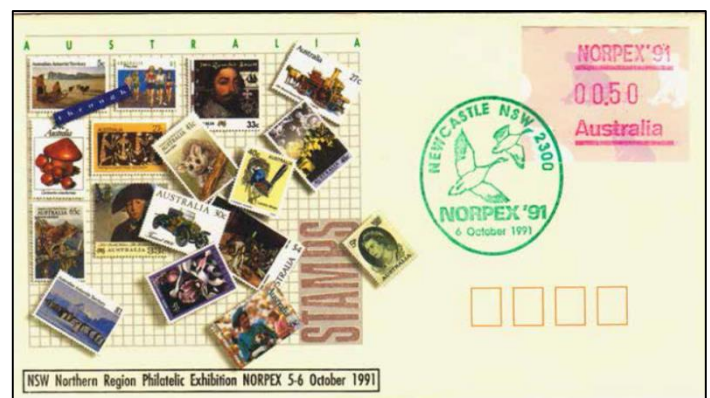
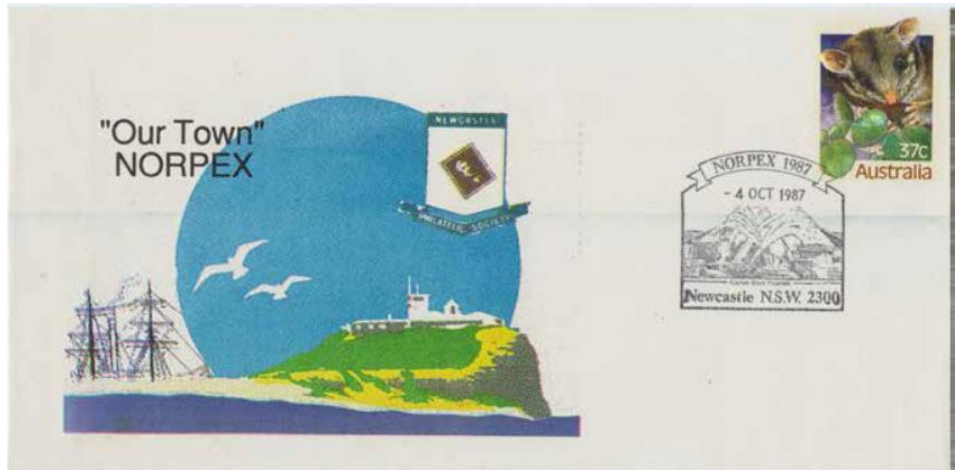
NORPEX '91 - NEW SOUTH WALES MINI-NATIONAL EXHIBITION

Again, as in 1987, Newcastle provided the venue for a relaxed and friendly philatelic Exhibition. The venue on this occasion, the Waratah Technological High School, Multi-purpose Building, was excellent in regard to natural lighting, with glass the full length on three sides. Sunlight was not a problem, due to the wide mezzanine level above the exhibition area, with its overhanging roof. There was ample parking and the school grounds and adjacent park, provided shaded seating. The school canteen ladies provided excellent refreshments at most reasonable prices, and were very happy with their takings for the weekend.

Overall area and floor layout was similar to the 1987 exhibition, with nine dealers and a temporary Australia Post annexe. Twenty entries comprising 104 frame were received for the National Classes, (British Commonwealth, and Asia/Oceania) and 37 entries plus nine literature entries for the State Level Classes.

As entry to the exhibition was free, it was difficult to assess the number of people attending, however there were always people buying from the dealers, and it was also particularly pleasing to note that many were viewing the exhibits.

A Frama with a special cliché was available.



NEWCASTLE '94 - Modified National Exhibition

The venue for Newcastle '94 modified national exhibition was the Waratah Technology High School, on the Saturday and Sunday of the Easter weekend (2nd & 3rd April 1994). This venue had proved ideal for Norpex 91, both in size and for its exceptional natural lighting (direct sunlight being excluded from the exhibition area by the mezzanine balcony area).

The exhibits, 156 frames (sides of 15 pages) plus Jury displays comprised 15 entries in the National Modern Period section, which included the Traditional Philately, Postal History, Aerophilately and Postal Stationery Classes.

Only nine entries were received for the ten available Classes at State level, one possible reason for the dearth of entries at this level may have been the number of exhibitions held within a period of four weeks, namely Canberra Stamp Show 94, Newcastle 94 and the Regional Exhibition Mountex at Blackheath.

The One Frame section was well supported with 29 entries, covering a variety of subjects. Many were first time exhibitors who submitted well prepared exhibits. The section was thus achieving its goal, in encouraging collectors to venture into the exhibiting arena. The Modern period exhibits certainly provided some surprises in the quality of the items included.

National classes at Newcastle '94, were Modern, which covered material from the Second World War till 1994 in Traditional, Postal History, Postal Stationery and Aero and Astrophilately, plus all classes at State level as well as a One Frame class on any subject.



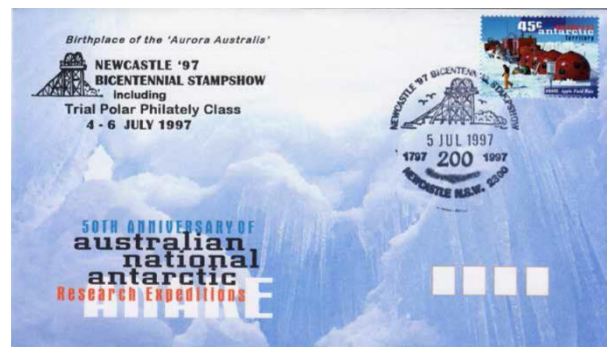
NEWCASTLE BICENTENNIAL STAMPSHOW 1997.

NEWCASTLE BICENTENNIAL 97, a competitive Half-National Exhibition, open also to international participation, was held at the Waratah Technology High School, Turton Road, Waratah between July 4th - 6th, 1997.

The Exhibition was organised by an approved committee under the auspices of the New South Wales Stamp Council and the Australian Philatelic Federation (APF).

The society members' assistance in the mounting and demounting of the exhibits and other infrastructure, was speedy and efficient, and resulted in the judges being able to commence their deliberations an hour earlier than scheduled. Many interstate visitors stated how much they enjoyed the friendly atmosphere of the exhibition and the hospitality shown to them by society members.

National Competitive Classes included, Postal Stationery, Maximaphily, Aerophilately/Astrophilately, Social Philately, Thematic and Polar Philately, as an experimental class



NEWCASTLE STAMPSHOW 2003

Held over three days October 3rd -5th, 2003 Newcastle played host to a half National Stamp Exhibition at the Callaghan Campus, Waratah Technology High School. A steady stream of visitors came through the doors over the three days. The 58 competitive exhibits in five FIP and three non-FIP classes were assessed in strict accordance with the FIP regulations.



NORPEX 2015

This now brings us to NORPEX 2015, a National One Frame Exhibition, held under the auspices of the Australian Philatelic Federation, in the Wallsend Pioneer Hall, Corner of Cowper Street and Newcastle Road, Wallsend, 31 October-1 November.

The exhibition was open to all Philatelic Classes including Picture Postcards. In all 86 entries were received, making this one of the larger if not the largest One Frame National Exhibitions held in Australia.

Being held in the Centenary Year of the ANZAC landings in Turkey, it was thought appropriate that the exhibition where possible commemorated this event that is now so much part of our history.

Earlier on the organising committee decided to apply for two special commemorative cancels, one for each day of the exhibition. There are two iconic structures that stand out in the city of Newcastle - Christ Church Cathedral which overlooks the inner city and Harbour. The Cathedral is home to a Victoria Cross that was awarded during WWI as well as the *Book of Gold* that is encased in a cover made from gold from wedding rings from widows of soldiers that died during WWI. The second structure is very new only being opened to the public on 25th April 2015. In its short time this walk has attracted many hundreds of thousands of sightseers and walkers, making it one of the most visited attractions in the city. It was therefore fitting that the Cathedral and the Walkway be featured in some way. After the cancels were made it was discovered that for reasons better known to Newcastle City Council the walkway was simply called *Newcastle Memorial Walkway*. Therefore, the original cancel which included *ANZAC Centenary Walkway* was withdrawn and replaced with the correct official name.

NORPEX 2015 National Stamp Exhibition
1 November 2015
Newcastle NSW 2300 Christ Church Cathedral



NORPEX 2015 National Stamp Exhibition
31 October 2015
Newcastle NSW 2300



Newcastle Memorial Walk

Amongst the souvenir products produced are three different personalised stamps depicting the three service medals that were generally awarded to Australian Service Personnel who served during WWI.



The Soldier depicted on the NORPEX 2015 Logo is located in front of the old Newcastle Post Office on Hunter Street.