



VIEWS FROM NOBBY'S

Newcastle Philatelic Society Newsletter

Newcastle Philatelic Society, P.O. Box 34, Jesmond NSW 2299

Website : www.newcastlephilatelicsociety.org.au

August 2023 Newsletter 207 EDITOR: Jim MacDougall

We meet at **2:00pm** on the **SECOND THURSDAY** and at **2:00pm** on the **THIRD WEDNESDAY** of each month at the **Pasterfield Centre**, Horizon Drive, Cameron Park

VISITORS ALWAYS WELCOME

NEXT AUCTION

Almost everybody went home happy with something after our last auction (see Don's report). We're expecting to run another auction later this year. We'll let you know when the date is decided. In the meantime keep checking our website for this and other Society news. Greg does a fine job of keeping it up to date and interesting.

UPCOMING EVENTS

10 AUGUST Thur – *Annual General Meeting, Annual Competition, awards*

18 AUGUST Wed – social meeting, GEORGE CHALMERS, *Pre-cancelled United States*

14 SEPTEMBER Thur – monthly meeting, JOHN MOORE, *Zanzibar Air Mails*

20 SEPTEMBER Wed – social meeting, CHRIS ASHHURST-SMITH *Collecting Postmarks and Postal Dates* & RON DAVIS, *Around the Himalayas*

12 OCTOBER Thur – monthly meeting, GREG LAIDLER, *Ship mail from USS Augusta 1931-46*

18 OCTOBER Wed – social meeting, DON CATTERALL, *Postcards*

9 NOVEMBER Thurs – monthly meeting, ANDREW BROCKETT, *Australian POW mail*

15 NOVEMBER Wed – social meeting, ROSS ZIMMERMAN *Mount Fuji* and TONY AYUZ *Pakistan to 1947*

29 NOVEMBER Wed – CHRISTMAS LUNCH, 11.00am to 3.30pm at the Pasterfield Centre.

Wallsend Stamp Fair

is held at the **Pioneer Hall** in Wallsend on the **3rd Sunday of each month** from 10:00 to 3:00. So look for the next ones on **Aug 19, Sept 16** and **Oct 21**.

Member Displays: On our website you can find scans of displays from some of our members. Most of them are one frame displays, that is, 16 pages. Just open the website and choose the 'Member Displays' tab. We welcome members to contribute a similar display; we can scan it for you if necessary. No member names are attached to these displays.

PRESIDENT'S PIECE

Another three months have passed by since the last newsletter. And it has been a very positive time for our society. Thanks for this must go to our displayers, the afternoon tea people, the bidders in the monthly auctions, and the furniture people. Sorry if I have forgotten anyone.

We trialed a Friday night auction last month, and the new evening did not seem to affect the vendors and bidders. Our main organiser Don C is talking about reducing his involvement in the auctions. He has been involved for many years, having done a great job over a long time.

Our Newsletters are now stored digitally by the State Library of NSW and the National Library in Canberra. It is a credit to Jim MacDougall and his predecessor Ron Davis that these newsletters will be kept for posterity, and even read by someone 50 or 100 years from now.

Consider being on the committee of the society. The committee organises everything that happens in the society. It meets on the first Thursday of the month at 2pm, in the Pasterfield Centre. Nominations are to be tended at the Annual General Meeting, held on 10th August. Ask one of the committee members if you would like to know more.

The Annual Competition is judged early August, with the winners being announced after the Annual General Meeting. Consider entering a 16 page collection or display. Newer members can enter fewer pages, but will not be judged as the more competitive displays are judged. All entries are laid out on the tables to be viewed after the meeting. This makes a good chance to see what other members collect, and how they set out their collections and displays.

Winter is a good time to build on your collections. Turn on the heater, get out the tweezers and album pages, and happy collecting.

Greg Laidler, President

SECRETARY'S SNIPPETS.

Your President in his piece in this Newsletter mentions our annual competition the results of which will be announced following our August Annual General Meeting. From time to time, I am asked for ideas on putting an entry together and tips on how to go about doing this. One way to gain ideas is to see what others have done and, in this case, I will mention SAVPEX one frame [16 page] exhibits. SAVPEX stands for South Africa Virtual Exhibition of which a number have now been held, the most recent being this month where I was invited to be one of the judges. All the exhibits from this year's exhibition as well as previous years can be viewed at <https://stampssa.africa>.

Viewing these exhibits will give the viewer ideas for topics, how to present and write up their exhibits. An added plus is that the actual score of each exhibit is shown which allows the viewer to compare results.

I realise that exhibiting is not for everyone, and that some people prefer to do their own thing. The important thing is to enjoy collecting, displaying your material and the interaction with other like-minded collectors.

John Moore, Secretary

A reminder that our Annual General Meeting will be held on 10 August. It is also the date of our annual competition. Come along and see what others collect, and how they set out their collections. It is also a good way to 'break the ice' with someone you may not have talked to before.

AUCTION NIGHT Jun 23, 2023

Lots of material was up for grabs on this night with 398 lots in all. There was a decent crowd with 32 bidders in attendance and only one went home empty handed. Lots came from 22 sellers and most enjoyed good sales; 157 lots found a buyer and this represents a satisfactory clearance rate of 39.3%.

Total sales for the night were \$1446, quite a good amount for this number of participants. Best sale of the night went three ways, with each raising \$50. First was a KGVI set of Cyrenaica, (British occupation of Libya WWII). Second was a KGVI set of Aden and third was a MUH two shillings Victoria Statute. Next came two lots at \$40 - first a huge collection of Japan, sorted on pages and then a Hagner binder stocked with MUH blocks of early Oz and AAT.

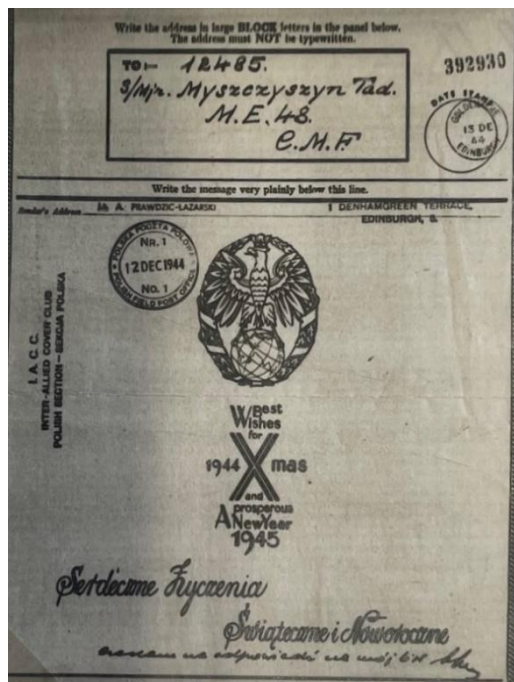
A display on pages of Soviet Arctic fetched \$28 as did a complete KGVI 1937 coronation set. Finally at \$26 came yet another KGVI set, this time from the Gold Coast. Another dozen or so lots sold around the \$20 mark and bags and boxes of used Australia sold particularly well on this occasion.

The working team were busy during the night and all seemed to be set up in the blink of an eye. The whole night went smoothly and thanks go to all who contributed to this very successful night.

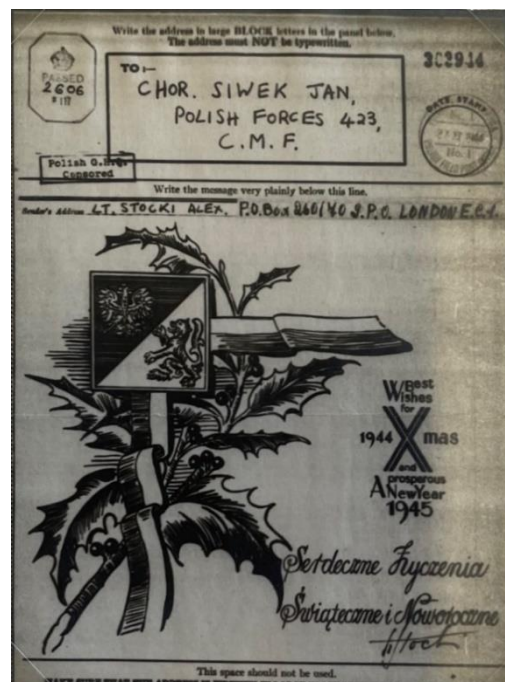
Don Catterall, Auction Convenor

New Members Peter Mayon and Jenny Goodson have recently joined the Society. We are always happy to have new members. Welcome, Peter & Jenny!

POLISH AIRGRAPHS – George Kuszelyk Thur, May 11



We had an excellent turnout of 20 members and 2 visitors for the May monthly meeting which featured a selection from George's extensive Polish collection. During the German occupation of Poland in WWII, the Polish government-in-exile in London maintained Polish mail services as best they could. Mail to the Middle East could take as much as 3 or 4 months by ship and was unreliable, so a clever alternative was established. People sending mail would write their letters on special forms which were then microfilmed and the negatives sent by air to Cairo where it was enlarged and printed, again on a



special form to be delivered to the recipient. This process typically took less than three weeks. The forms are called *Airgraphs* and were in use from March 1941 until July 1945.

George has gathered an impressive collection of these airgraphs spanning this whole period. About 22 different types of forms were used, and there were many variations due to the use of different printers. In addition the mail was censored, resulting in a variety of different censor markings. Some of the forms were elaborately decorated, as shown here.

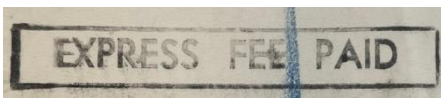
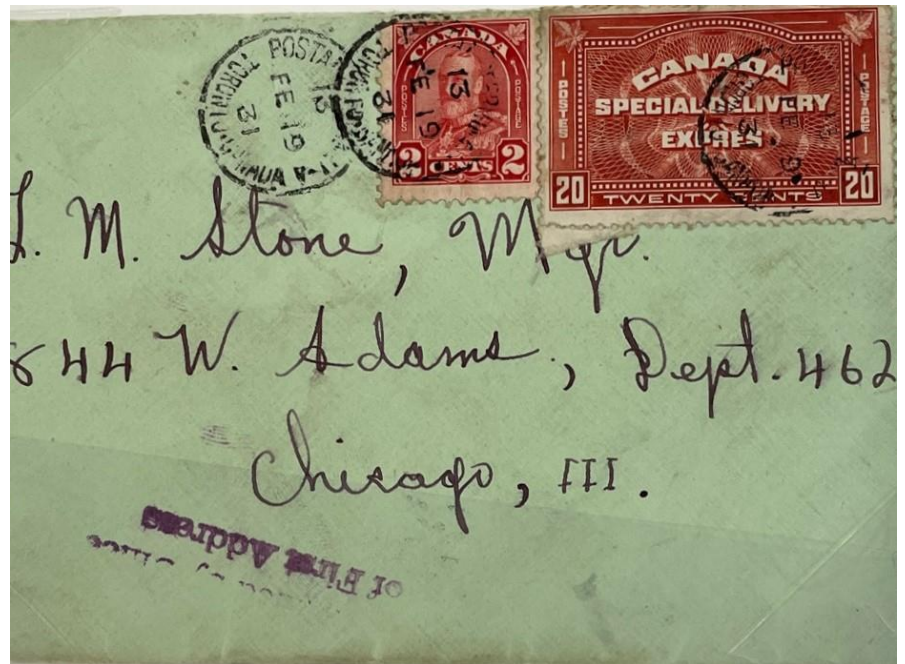
As well as doing impressive research in this area, George has obtained some very scarce material. A very impressive display.



CANADA SPECIAL DELIVERY - Roger Eggleton
Wed, May 17

The Canadian Post Office introduced a Special Delivery service in 1898 (the same year in which Imperial penny postage began) and it operated until 1993. At first the service was only available in the largest cities and a 10¢ fee was charged in addition to the normal postage. It was later expanded. The combination of security and guaranteed fast delivery was clearly popular with the public. Much of Roger's display concentrated on the period from 1922 to 1939 when the fee was 20¢. For many years it was required to affix a Special Delivery stamp to the letter but in later years the fee could be made up using ordinary postage stamps. But then the envelope had to be clearly marked as special delivery. This special marking called an 'etiquette' took many forms, sometimes just a handwritten notation, but later various stick-on labels.

Roger's display was a very comprehensive account of these changes. He showed many uses of the 20¢ stamp (as well as some of the earlier and later stamps), many of which were letters to government officials, parliamentarians or businesses. In addition his covers displayed an excellent variety of etiquettes, illustrating how they changed over time. Some are shown here. I was especially impressed by the covers between Canada and UK and between Canada and Germany with whom there were reciprocal arrangements.



POSTAL USES OF THE 1927 OPENING OF PARLIAMENT HOUSE STAMP

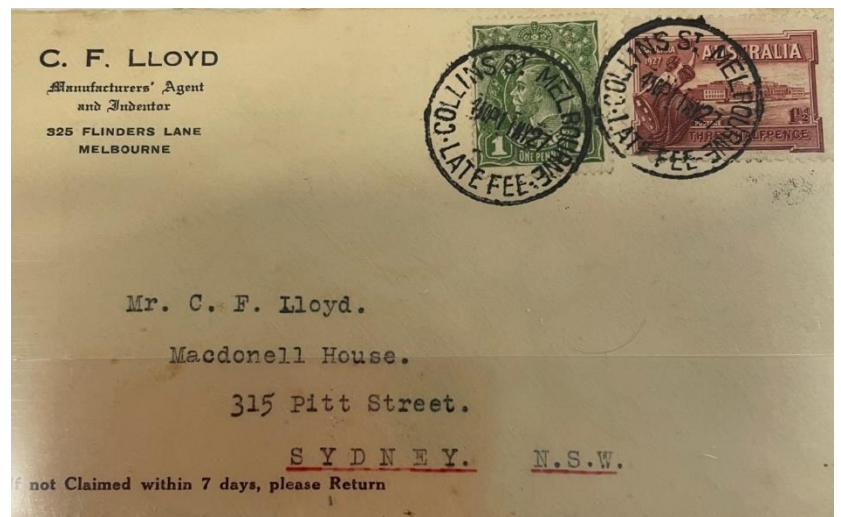
Greg Laidler, Thursday June 8,



Greg treated us to a marvellous display of the many and varied postal uses of the stamp issued to commemorate the opening of

Parliament House in Canberra. The official opening took place on May 9, 1927 and the stamp was issued the same day, with stamps available for sale there on the day. Despite the opening, Parliament House was not used for business until a few weeks later. The area was named Federal Capital Territory in 1911 and the F.C.T. postmarks were used until 1938 when it received its current name.

The denomination for the new stamp was chosen to be 1½d which was the base rate for domestic mail and mail to England. Standard overseas mail needed 3d and domestic registration cost an additional 1½d, so the stamp got plenty of use. Greg has found examples of almost every imaginable postal usage involving this stamp. One cover included 1d extra postage as a 'late fee' for missing the normal deadline for the mail train. Others were mailed from ships at sea or from foreign ports. Another had additional prepaid postage to use airmail within USA. Greg had letters mailed from many post offices; one of the more unusual was the 'Otway Saw Mills' in Victoria. Some stamps were perforated OS for use on federal government business. There was similar usage for the states; the block of four shows the T perfins for use on official Tasmanian government business. Private companies could even perforate the stamps with their business initials.



Thanks to Greg for a fascinating display. His use of large format pages helped show the material effectively. The knowledge shown here along with his recent publication on this stamp undoubtedly make Greg the Australian authority on it.

So many compensations reward the stamp collector that it is difficult to decide which is the greatest benefit to accrue from his avocation. After all, the sheer delight it affords justifies our interest and brings ample returns to our effort.
 - US President Franklin D. Roosevelt

**JAMAICA – Jim MacDougall
Wed, April 20**

This display showed stamps and covers from Jamaica. The country is an island south of Cuba in the western part of the Caribbean. Originally controlled by Spain it became a British colony in 1655 and independence was finally achieved in 1962. It is now a constitutional monarchy. Jamaica's first stamp issue appeared in 1860 and for the next 70 years all stamps were printed by De la Rue in London.

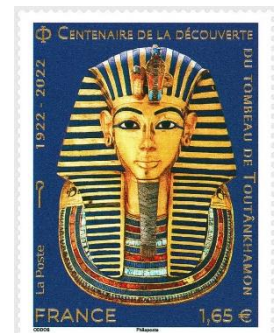
This display showed most of the stamps issued until the end of the reign of George V, both mint and used, in most cases. In addition there were many covers for the post-Victorian period illustrating various postal usages. For many of the stamps the source and significance of what was pictured on them was explained. The same engraving of Queen Victoria was used until 1901 when a single pictorial stamp appeared. The first pictorial series was issued in 1919.

One of the highlights was the attractive set appearing in 1944 to celebrate the new constitution. Another was the collection of WAR TAX stamps used from 1916 to 1920 to raise money for the war effort. The child welfare stamps (1923-1927) raised money for the Child Welfare League – the set of three were made from striking photographs of children. One curiosity was the number of covers that had stamps affixed to the back.



KING TUT LIVES AGAIN !

Last year marked the 100th anniversary of the discovery of the tomb of Pharaoh Tutankhamun. This discovery was undoubtedly one of the greatest in archaeology to date. After five years of searching, Englishman Howard Carter discovered the tomb by chance on 4 November 1922. Tutankhamun only reigned for 10 years and died at age 19 in 1323BC, so he does not rate among the important Pharaohs of Egypt – the importance of the discovery rests on the vast haul of priceless artefacts in his tomb. The most famous find was without doubt the mummy's gold funerary mask; and the archaeologists also found a gilded throne chair and a pure gold coffin. In 2007, his mummy was moved from his stone sarcophagus to a glass case for display.



Several countries have celebrated the anniversary with stamp issues. France released a stamp showing the famous funerary mask, along with other philatelic items. Hungary issued a mini-sheet showing the nested coffins inside the sarcophagus, along with a stamp showing the funereal mask. The accompanying first day cover shows Howard Carter discovering the tomb. Belgium, however, is the clear winner with a mini-sheet that folds up into the shape of a pyramid so that there is a stamp on each of the four faces! This issue also commemorates the 75th anniversary of the death of Belgian Egyptologist Jean Capart.

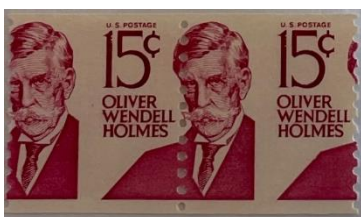


ERRORS ON STAMPS – George Chalmers Thurs, July 13

George is one of the newer members of the Society and this was his first display. We had a fine turnout of 25 members and one guest – the largest in many years. George’s display on errors provided ample proof of the old saying “If something can go wrong, it will!” He focused mainly on errors of production rather than errors in design, and there seemed to be an inexhaustible number of ways the printers could get it wrong.

Overprinting produced many kinds of errors: inverted, wrong colour, double struck, off-centered. Some examples had to be examined carefully to notice the flaw. Perforation was another source of error. There were examples where the row of perforations was too low or too high or too far to one side or the other. Some had perforations between stamps that were supposed to be imperforate and vice-versa. One perfin had the letter backwards.

Colour was another source of error. He had many examples where one of the colours was missing or partially missing. Sometimes the wrong colour altogether was used. Occasionally, printing or colouring was accidentally shifted sideways. His examples of errors in design included one where the wrong value was printed on the stamp and another where the ‘d’ was omitted on one corner of a ‘2d’ stamp. Charles Lindbergh’s portrait is missing from the stamp shown here.



A very helpful feature of George’s display was the inclusion of a correct copy of each stamp beside the error copy, so we could easily compare. This collection clearly must have taken a long time to assemble. Thanks to George for an enjoyable show.



Empire Classics



The British colony of St Vincent is an island in the Caribbean. Its first post office opened in 1852 and British stamps were used for 10 years before its own issues appeared. Perkins, Bacon’s effort was a fairly standard Queen Victoria design, which served the colony well for 20 years. In 1880 a 5 shilling high value was needed and the printer’s new design was quite different, featuring the colony’s coat-of-arms, rather than the Queen. The Roman figure of ‘Peace’ is offering an olive branch to ‘Justice’, who is balancing her scales. Above them is the island’s motto meaning ‘Peace and Justice’. Similar depictions appeared on a number of different issues in later years, including this King George V high value of 1938.



CRUISING THE CARIBBEAN - Ron Davis

Wednesday, July 20

While stamp collectors usually only collect North America or Central or South America, Ron assembled a display of the 31 stamp-issuing islands in the Caribbean Sea, ranging from the Bahamas in the north to Trinidad and Tobago in the south. The Bahamas are technically in the Atlantic Ocean, but are generally accepted as being Caribbean countries.

Ron Davis entertained a larger than normal attendance with this display. Ron assembled two pages for each of the countries, which included Redova, an uninhabited island. Ron included a map with each stamp issuing country, and a brief history of the island/s. The stamps reflect the Spanish, French, English and African influences from the colonial period.



Great Britain, Denmark, United States, France and the Netherlands had been fighting over ownership of each of the islands for many years, but most of them are now independent. As well as the usual scenic postcards, postage stamps and covers, and maps of each island and of the West Indies, Ron had a copy of a letter from Viscount Horatio Nelson and some "Specimen" covers from Barbados. While the West Indies cricket team is well known in Australia, some of the islands were more-or-less unknown, such as Barbuda and Redonda (both dependencies of Antigua).

Ron's display had been compiled over many years, as you would expect from a collector of long standing. The variety of issues reflected Ron's interest in geography and stamps. A good study of the stamps, the people and geography of this area!!

New King Charles III Stamps

In the last Newsletter, I showed you the first UK stamps issued since Charles became king – they showed the first use of his silhouette where we were used to seeing that of Queen Elizabeth. Soon after those came the March issue showing his face left side on. Whereas the silhouette issues were all for 1st class postage, this new set of definitives covers four classes of domestic postage. In addition, there is a £2.20 stamp for international mail.



Upcoming Exhibitions:

- Taipei 2023, 11 – 15 August 2023
- Royale Exhibition, London, Ontario, Canada, 13 – 15 October 2023
- Perth National Exhibition, 2 – 5 November 2023
- Thailand 2023, 23 – 28 November 2023
- Phila Korea 2024, 15 - 19 August 2024