

Lot 9 - Thematic collection titled 'SMOKE and FLAME', 22 pages, some pages with only a few stamps on them, plus 6 blank pages for expansion, covers flames, smoke, engines, candles, war and pirates, olympic flame, scouts and fire, furnaces, fires, steam engines, space. Reserve \$5

SMOKE and FLAME

The Flame.

Adopted symbol for the 1968 International Human Rights year.



and the lamp and flame, adopted as the official 1963 Red Cross centenary symbol.



SMOKE and FLAME

But ships of the Sea, Air or Stars still
navigate by the atomic fire of the stars



SMOKE and FLAME

Less common in recent times are the steam railway locomotives.

Smoke has been created by 'puffing billies' and mainliners alike, in the age of steam.



Ancient and Modern.



Lot 10 - 16 pages (2 scanned) showing Australian commemorative or souvenir covers, from 1967 to 69 and 1978 to 1979. This is an under-collected part of philately, have a look. Reserve \$10.

AUSTRALIA

50 th. Anniversary of
Trans-Australian Railway.

Port Pirie Junction -
Kalgoorlie.



Mst. G. S. Shearer,
31 Smith St.,
Merewether.
N. S. W., 2291.

50 th. Anniversary of
Trans-Australian Railway.

Kalgoorlie - Port Pirie
Junction.



Mst. G. S. Shearer,
31 Smith St.,
Merewether.
N. S. W., 2291.

AUSTRALIA

Adelaide to Minlaton
Flight.



Mst. G. S. Shearer,
31 Smith St.,
Merewether, N.S.W.

2291.

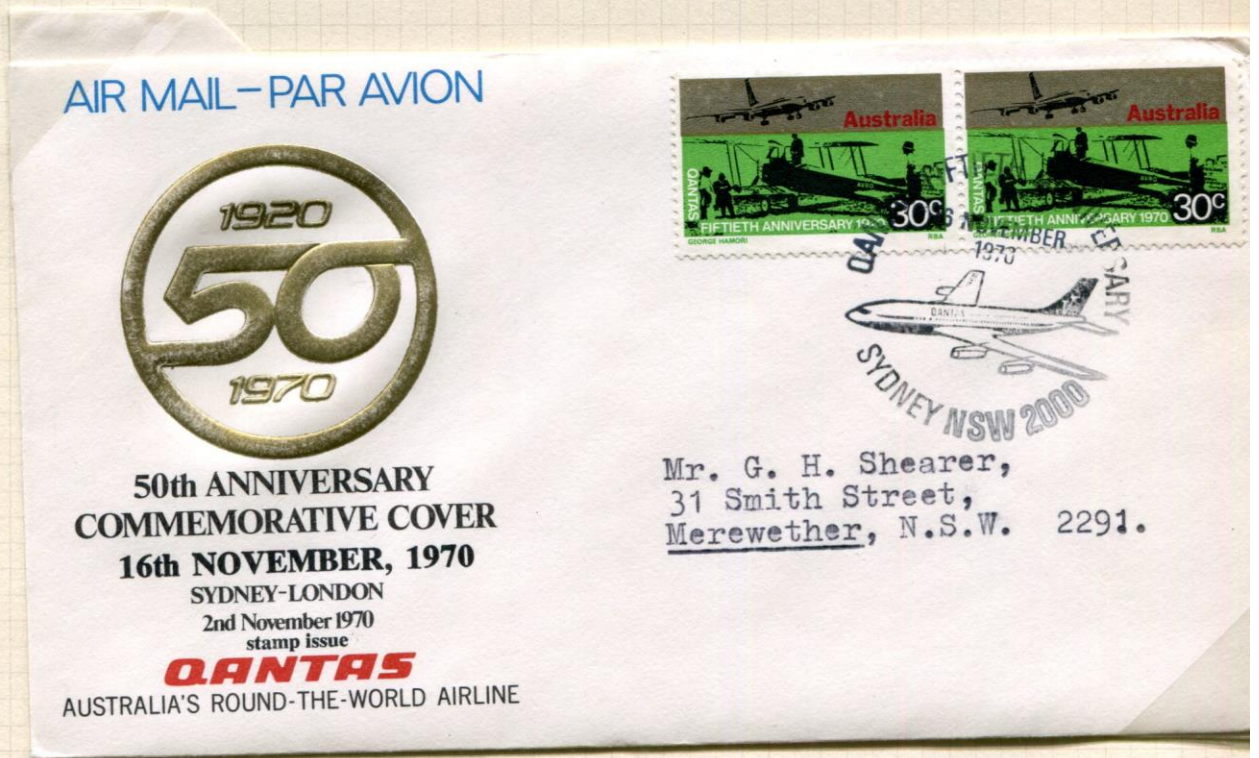
Minlaton to Adelaide
Flight.



Mst. G. S. Shearer,
31 Smith St.,
Merewether, N.S.W.

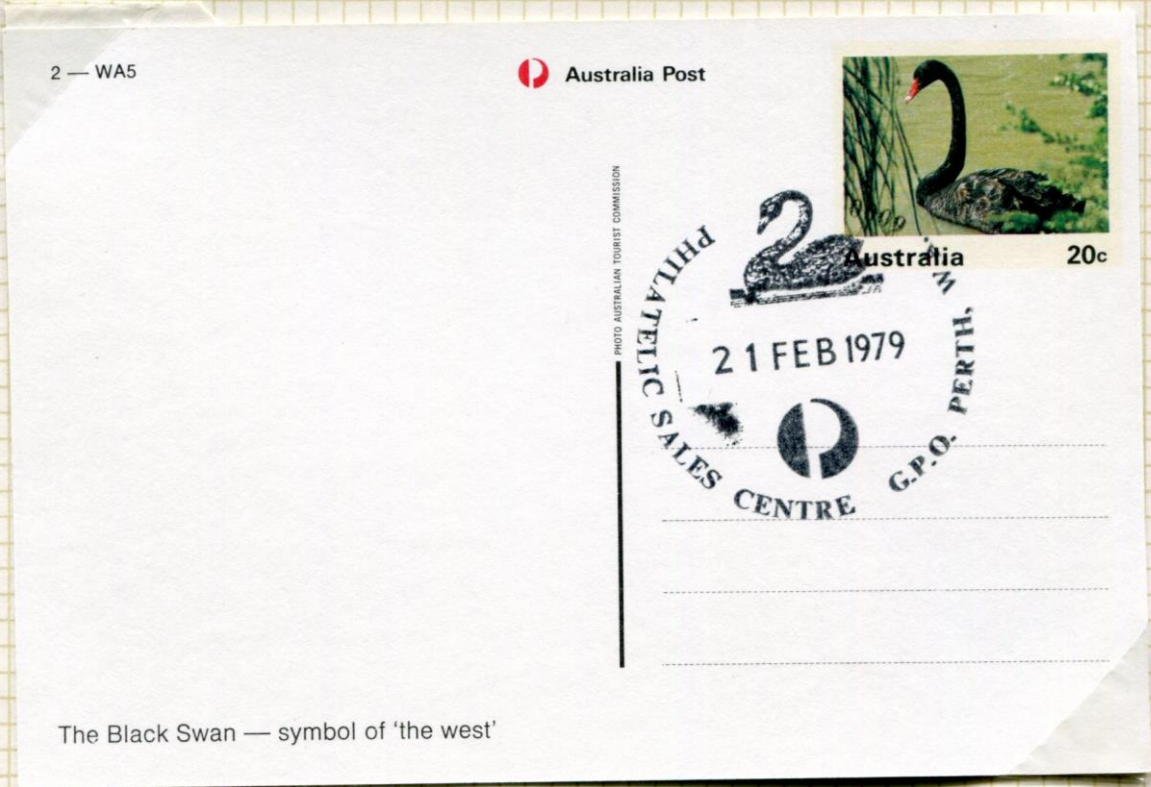
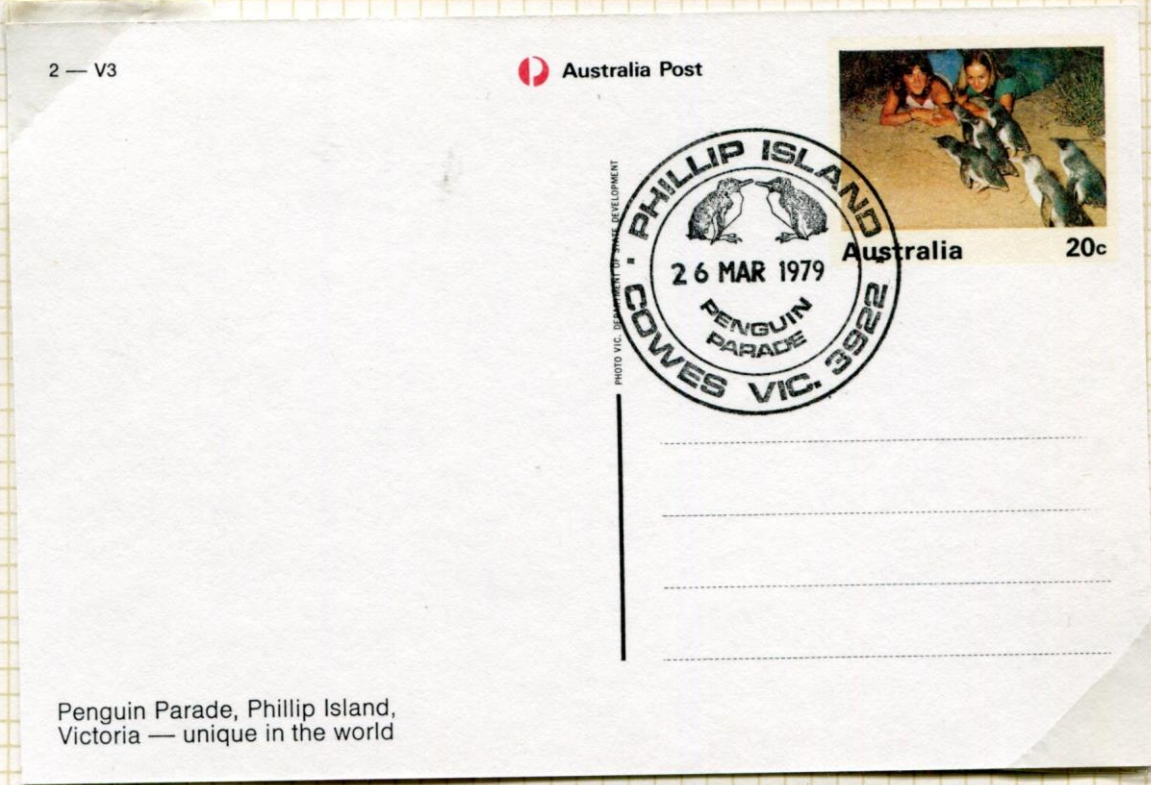
2291.

AUSTRALIA



Lot 11 - 16 pages, further commemorative and souvenir covers, date from 1972 to 1977. Reserve \$5.

AUSTRALIA



PICTURE and POSTMARK.

AUSTRALIA

Post Office Souvenir Cover



Sir Colin MacKenzie Sanctuary, Healesville

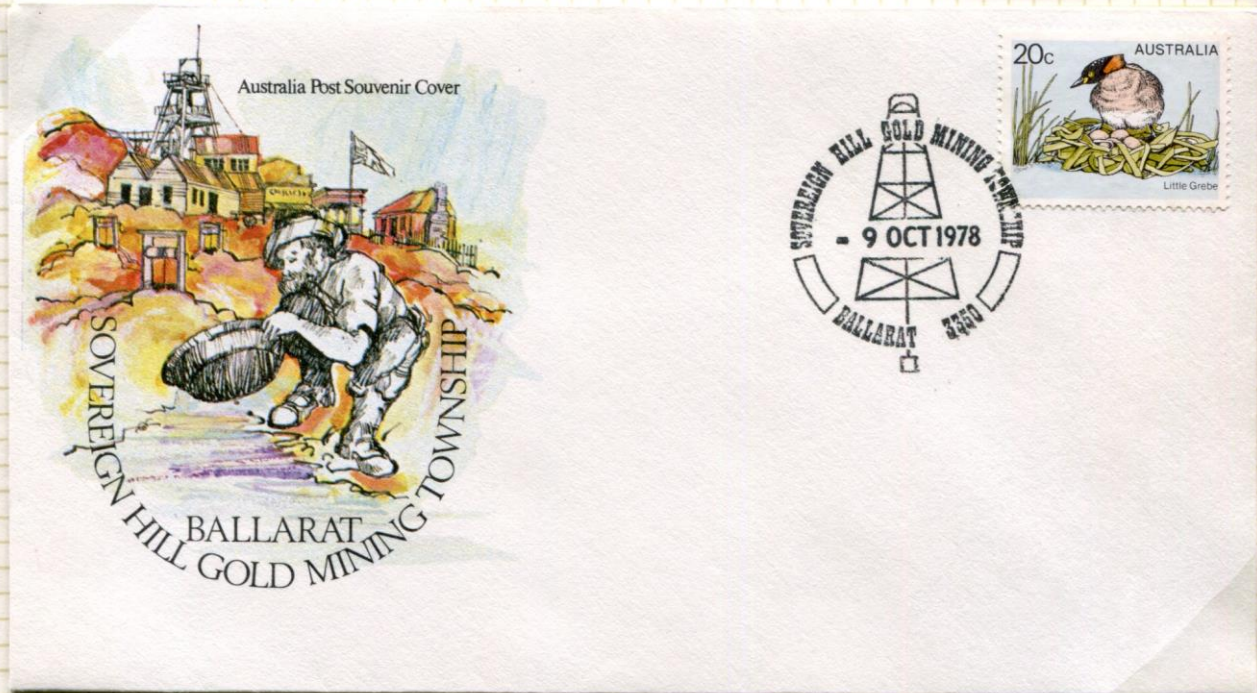
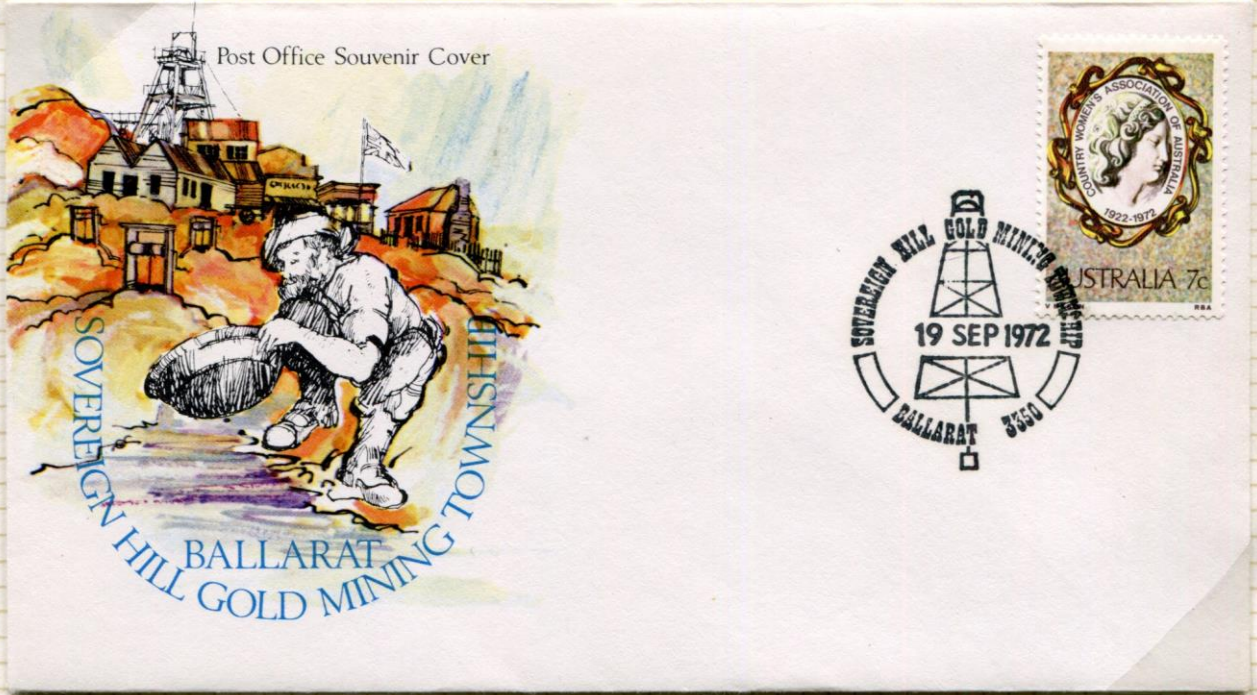


Post Office Souvenir Cover
Sir Colin MacKenzie Sanctuary
Healesville



POST OFFICE SOUVENIR COVERS.

AUSTRALIA

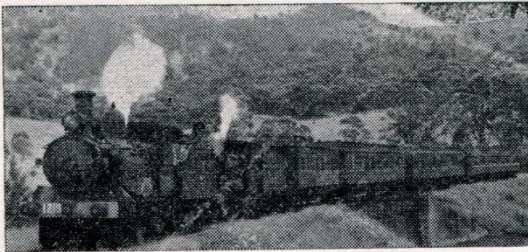


Lot 12 - more commemorative and souvenir covers, 8 pages, from 1968-1970. Reserve \$10.

AUSTRALIA

Official Souvenir Cover

C. A. Wheeler



Edgeworth
David

1858-1934
Geologist



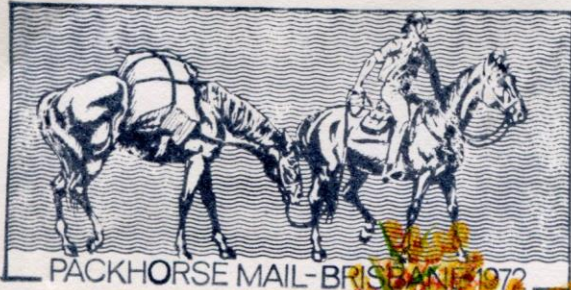
Mr. G.H. Shearer,
31 Smith Street,
MEREWETHER 2291
N.S.W.

M. Bulmer
CENTENARY COMMEMORATING OFFICIAL OPENING
OF RAILWAY SERVICES TO MUSWELLBROOK —
MAY 1869



AUSTRALIAN POST OFFICE PHILATELIC COVER

AUSTRALIA



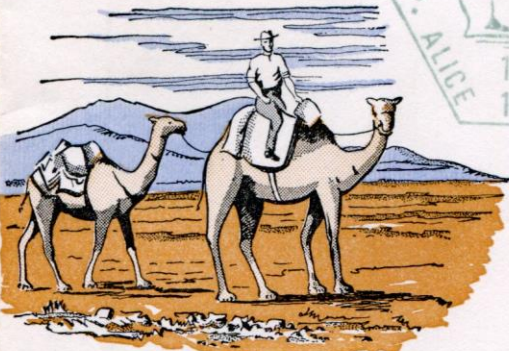
AUSTRALIAN POST OFFICE PHILATELIC COVER



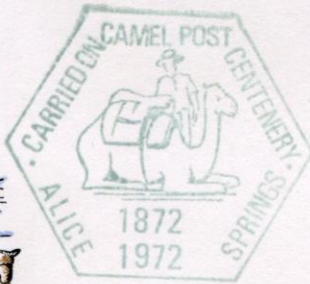
Mr. G. H. Shearer,
31 Smith St.,
Merewether, N.S.W. 2291.



AUSTRALIAN
NATIONAL
PHILATELIC
EXHIBITION
CAMEL POST



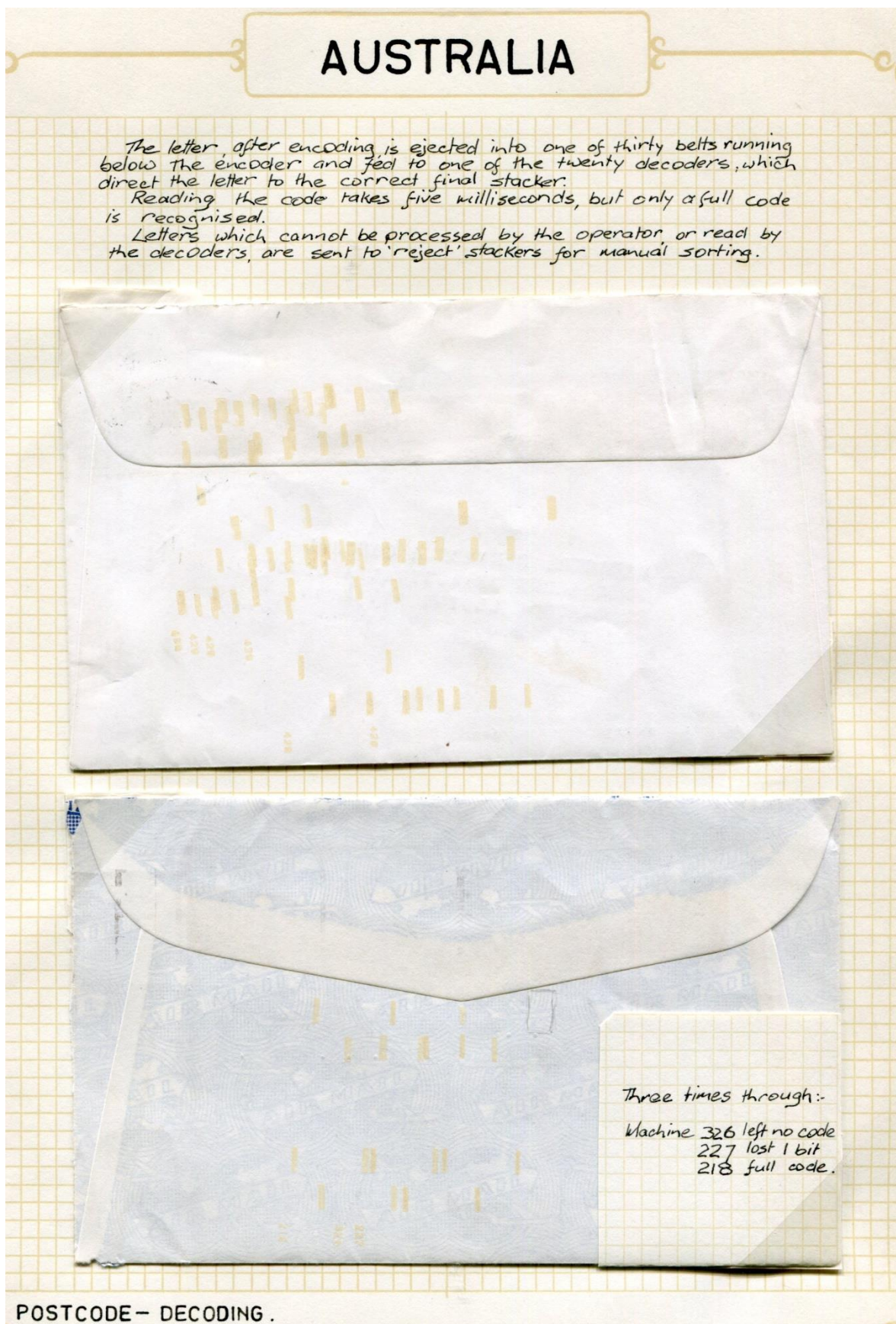
ADELAIDE
AUGUST, 1972
OFFICIAL SOUVENIR COVER



Mr. G.H. Shearer,
31 Smith St.,
Merewether, N.S.W. 2291.

MOVING THE MAIL — ONE HUNDRED YEARS AGO.

Lot 13 - a 19 page study of postal markings and mechanised mail. Traces the marks put on the back of letters (now replaced by the orange lines) and the introduction of priority paid mail. Most interesting and rarely seen material. Reserve \$8
Four scans, this scan reduced to 90% to fit the page.



AUSTRALIA

Sch. C6194/70

P.M.126

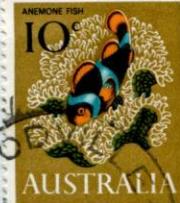
PRIORITY PAID 

PRIORITY PAID 

PRIORITY PAID 

PRIORITY PAID 

PRIORITY PAID 



STEWARTS & LLOYDS (AUSTRALIA) PTY. LTD
P.O. BOX 156, NEWCASTLE, N.S.W. 2300

PRIORITY PAID 

PRIORITY PAID 

Woodville SA.
2.0P28JY70

Sydney NSW
12.0A29JY70

PRIORITY PAID 

PRIORITY PAID 



Overnight deliveries on the 'Priority Paid' service are provided between nearly all the capital cities and their suburban areas in the network. Woodville is one of 9 selected S.A suburban offices.

AUSTRALIA



Stewarts and Lloyds (Australia) Pty. Limited,
P.O. Box 156,
NEWCASTLE ... N.S.W. (2300)

IRREGULARLY POSTED

**SPECIAL
DESPATCH**



ATTENTION : MR. J. SLOSS.

If not claimed in Ten Days, please return
to Box 42, P.O., North Fremantle

To meet the need of urgent mail the SPECIAL DESPATCH mail service was established in October 1967. In order to establish the foundations of a totally reliable service "Special Despatch" was not highly publicised. It was also limited to between the inner areas of the capital cities.
After two years of trouble free testing the service was extended to capital city selected suburban post offices and renamed PRIORITY PAID Mail Service. The service was extended after further testing in 1975 to major

country centres.
Priority Paid mail in capital cities can be posted after normal interstate mail closing times.

At the time of mailing this Special Despatch cover (1968) the service did not extend to Newcastle.

PRIORITY PAID.

AUSTRALIA



PRIORITY PAID TEST ARTICLE
 THIS ARTICLE HAS BEEN TESTED TO TEST
 A NEW SYSTEM FOR HANDLING
 URGENT INTERSTATE MAIL
 AUSTRALIAN POST OFFICE

STEWARTS & LLOYDS (AUST) PTY. LTD.,
 DISTRIBUTORS DIVISION,
 P.O. BOX 156,
 NEWCASTLE.

N.S.W. 2300

AIR MAIL
 PAR AVION

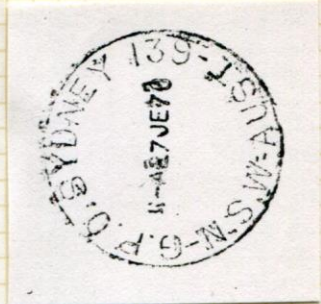


If not claimed in Ten Days, please return
 to Box 42, P.O., North Fremantle 6159

W.A. Mail Exchange. 27JUN 70
 Perth 11A 27JUN 70
 Sydney 11A 27JUN 70

'Priority Paid' mail closing times are later than Airmail
 closing times and provide either Same Day or Overnight
 delivery depending on time of posting.

Same Day from Brisbane to Sydney
 Melbourne to all other capital cities
 Adelaide
 Canberra
 or from Perth
 Overnight from Brisbane to Perth
 or from Hobart to other capital cities.



PRIORITY PAID.

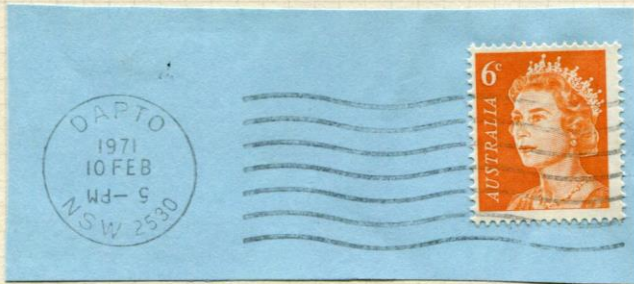
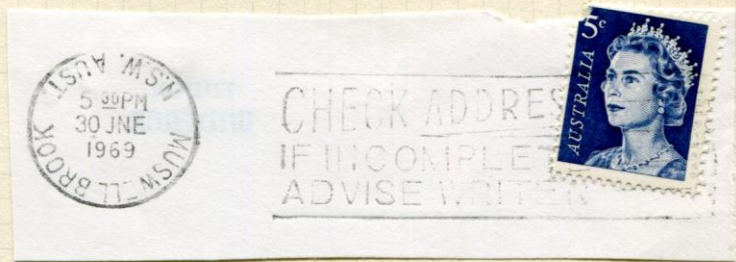
Lot 14 - 13 pages on slogan cancels and notes on postcode. Interesting, reserve \$5.

AUSTRALIA



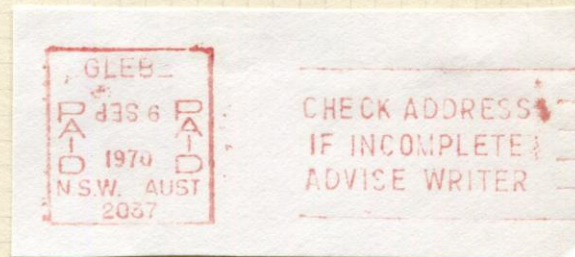
Things can be halfway there —

or the place you're
at can be upside down —



It can be hard to meet the
deadline —

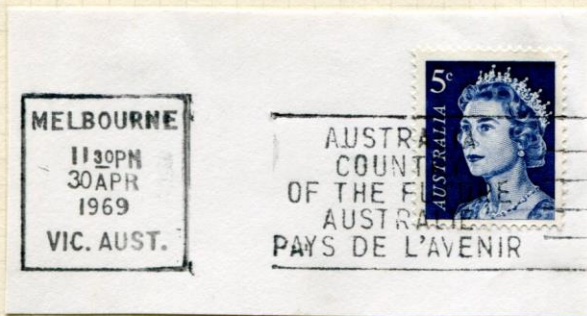
On one of those days —



— or even in one of
those years.

IN THIS TOPSY-TURVY WORLD —

AUSTRALIA



MELBOURNE'S BI-LINGUAL SLOGANS.

AUSTRALIA

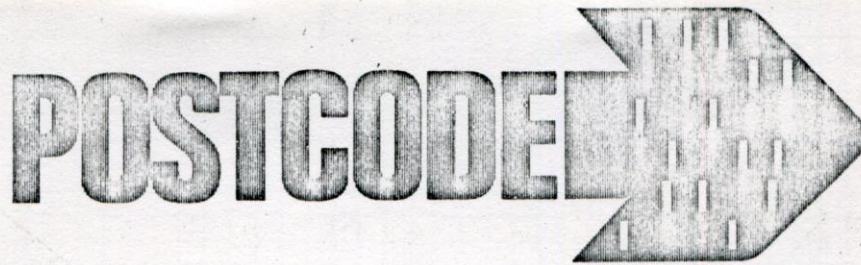
Many countries have their own method of rapid mail routing —



In England - the Post Code;



U.S.A. uses Zip Code



and Australia, Postcode.

Lot 15 - Set of 3 Royal brand first day covers of Australian Antarctic Territory definitive set of 16 Feb 1967, with values 1c to \$1. Nice and clean, 3 covers, reserve \$2. Scan at 90%.



Lot 16 - 14 pages of first day covers and cards, with some souvenir covers, from the period 1962 to 1978. Not your common stuff, good value, reserve \$5. Three scans, this scan at 90%.



AUSTRALIA

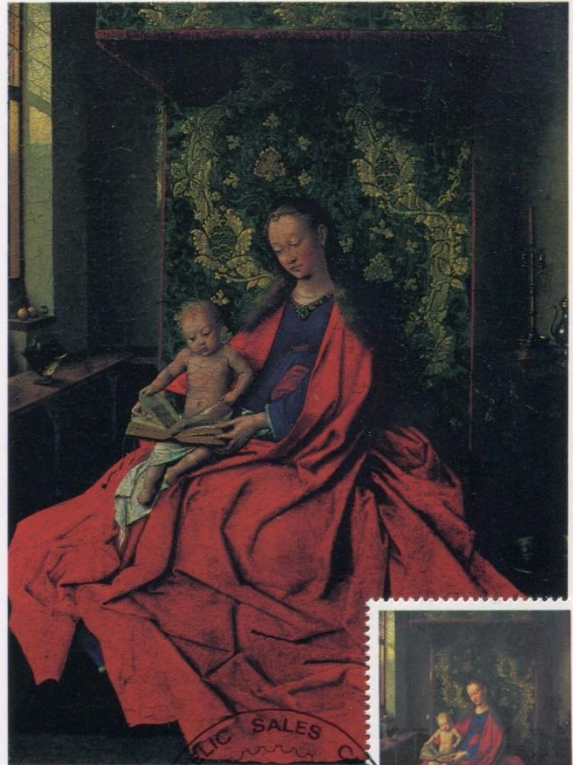


ASPC003

Christmas 1978 AUSTRALIA 55c



after van Eyck: The Madonna & the Child
Christmas 1978 AUSTRALIA 15c



ASPC002

Christmas 1978 AUSTRALIA 15c



del Vaga: The Holy Family
Christmas 1978 AUSTRALIA 55c



15c The Madonna and Child,
after Van Eyck.
55c The Holy Family
del Vaga.
Cover: No 121

Printer: Asher & Co, Melbourne
Photo-Lithography.

THE SPIRITUAL SIGNIFICANCE OF CHRISTMAS.

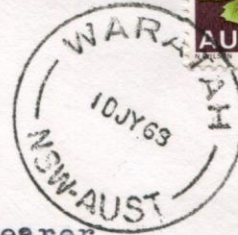
November 1 st, 1978.

AUSTRALIA

State Floral Emblems



Waratah *New South Wales*
 FIRST DAY OF ISSUE 10th JULY, 1968

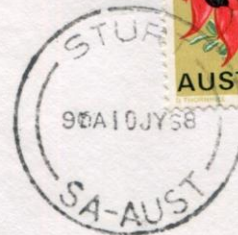


Mr. G. H. Shearer,
 31 Smith St.,
 Merewether,
 N. S. W., 2291.

State Floral Emblems



Sturt's Desert Pea, South Australia
 FIRST DAY OF ISSUE 10th JULY, 1968



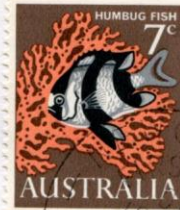
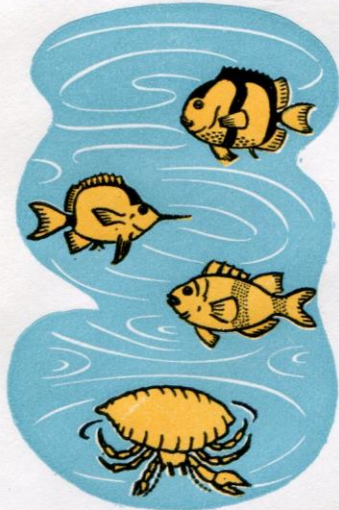
Mr. G. H. Shearer,
 31 Smith St.,
 Merewether,
 N. S. W., 2291.

Lot 17 - First Day Covers, from 1966 to 1967, 17 pages, all postmarked Newcastle Post Office. Mixture of Royal, Wesley and Excelsior branded covers. Reserve \$10. Two scans, this at 90%.



AUSTRALIA

Decimal Currency



Mr. G. H. Shearer,
31 Smith St.,
Merewether.

ROYAL 14th February, 1966

Decimal Currency

FIRST DAY COVER
THE KOOKABURRA



AUSTRALIAN BIRD SERIES



Mr. G. H. Shearer,
31 Smith St.,
Merewether.

DECIMAL CURRENCY ISSUE.

FEBRUARY 14th, 1966.

Lot 18 - Folder of 'odds and sods', nothing special, but really interesting. Includes an 'ambulance' cover, Readers Digest letter (front), postcard from Italy, few postal markings, envelopes with slogan cancels, telegram envelope, cutouts of postmarks and slogans, few black pages. No scans, reserve \$2.