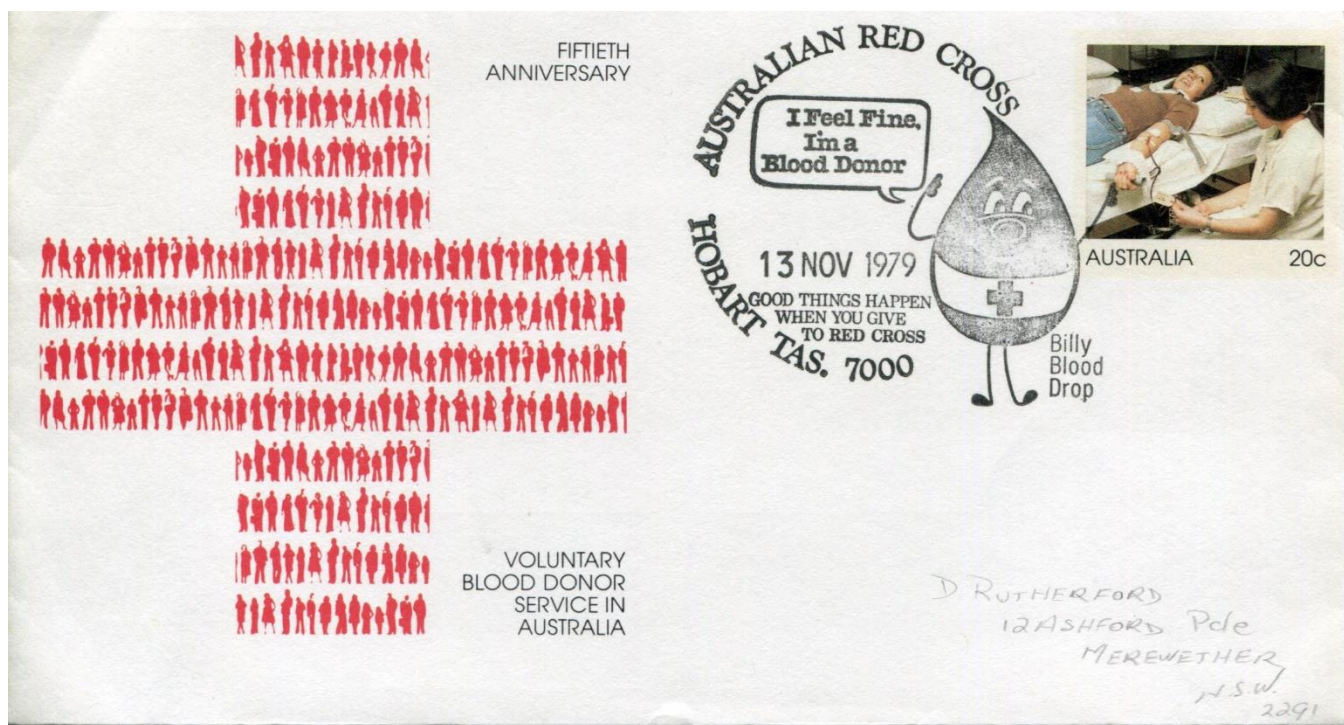
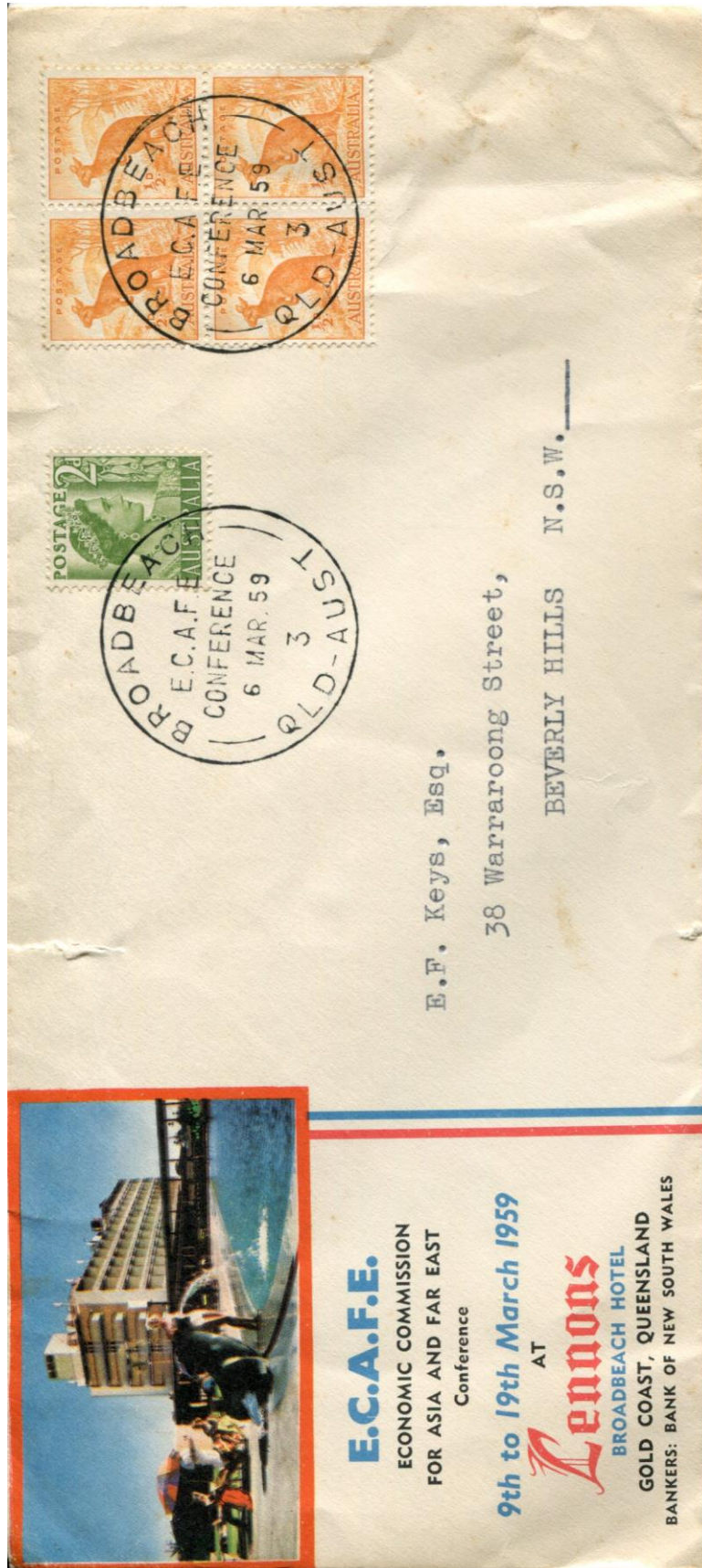


Lot 1 - group of 3 covers with special postmarks. First shows "Billy Blood Drop" in black, on the appropriate Australia Post cover. Reserve \$2

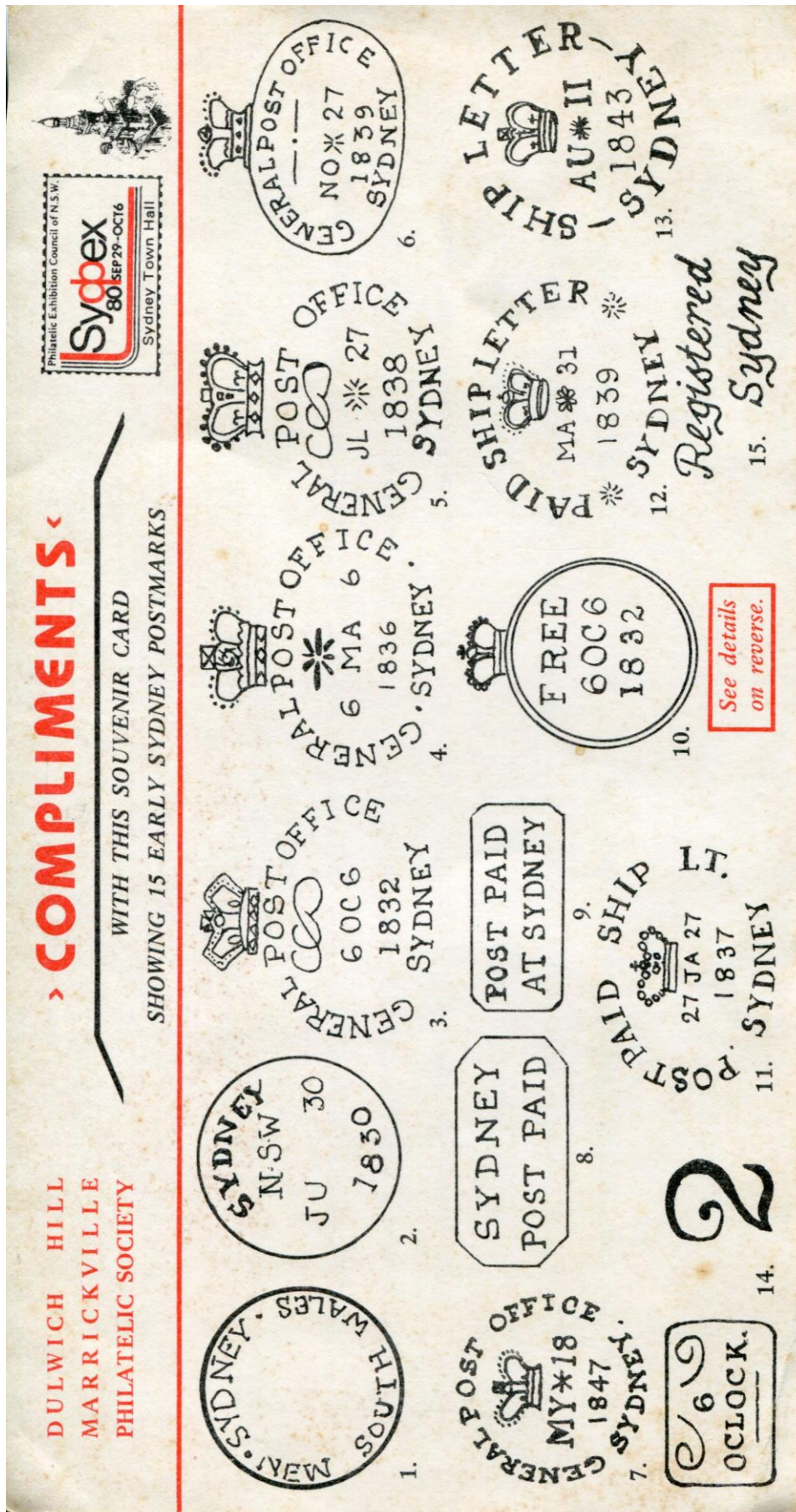


Other two covers scanned on the following two pages.

Cover 2 shows a commemorative cover with the commemorative postmark of ECAFE. These cancels are uncommon, on a special envelope even less common.



Cover 3 is a souvenir from a Sydney Philatelic Society, showing a range of postmarks used at the Sydney GPO. Just a bit of spotting, inspection recommended.



Lot 2 - Accumulation of postmarks on piece, a sample shown. Reserve \$2



Lot 2 continued, a selection of postmarks on cover.



Lot 3 - small group of GNSW perfins. Reserve \$1.



Lot 4 - two items from Papua New Guinea, as shown. Reserve \$1.



Lot 5 - group of envelopes, inspect at a meeting. Reserve \$1



Lot 6 - these two items, reserve \$1.



Lot 7 - returned (donated back again) lot from an earlier auction. Study of Postal Markings on mechanised mail, nicely written up on album pages. Reserve \$2. Three scans shown.

AUSTRALIA



After facing and cancelling (or feed from precancelled mail) the letters are presented to the stacker arms of the encoding machines.

Here the postcode (if shown on the envelope) is read by the operator and the appropriate keys used to impress the postcode via a computer on the back of the envelope.

If no postcode is shown a five letter alphabetical extraction code is used; the first 2 letters the 4th and the last 2 letters of the town name eg TAMWORTH becomes TAWTH.

If the name is less than 5 letters the full name is used and the last letter repeated eg HAYYY



AUSTRALIA

Sch. C6194/70

P.M.126

PRIORITY PAID 

PRIORITY PAID 

PRIORITY PAID 

PRIORITY PAID 

PRIORITY PAID 



STEWARTS & LLOYDS (AUSTRALIA) PTY. LTD
P.O. BOX 156, NEWCASTLE, N.S.W. 2300

PRIORITY PAID 

PRIORITY PAID 

PRIORITY PAID 

PRIORITY PAID 

Woodville SA.
2.0P28JY70
Sydney NSW
12.0A29JY70



Overnight deliveries on the 'Priority Paid' service are provided between nearly all the capital cities and their suburban areas in the network. Woodville is one of 9 selected S.A suburban offices.

AUSTRALIA



Stewarts and Lloyds (Australia) Pty. Limited,
P.O. Box 156,
NEWCASTLE ... N.S.W. (2300)

IRREGULARLY POSTED

**SPECIAL
DESPATCH**



ATTENTION : MR. J. SLOSS.

If not claimed in Ten Days, please return
to Box 42, P.O., North Fremantle

To meet the need of urgent mail the SPECIAL DESPATCH mail service was established in October 1967. In order to establish the foundations of a totally reliable service "Special Despatch" was not highly publicised. It was also limited to between the inner areas of the capital cities. After two years of trouble free testing the service was extended to capital city selected suburban post offices and renamed PRIORITY PAID Mail Service. The service was extended after further testing in 1975 to major

country centres. Priority Paid mail in capital cities can be posted after normal interstate mail closing times.

At the time of mailing this Special Despatch cover (1968) the service did not extend to Newcastle.

PRIORITY PAID.

Lot 8 - Selection of Australian KGVI definitives on album pages, 23 pages but stamps spread out. Some mint, some very fine used. All are hinged. Best are the Arms set of 4, CTO and well centred. Reserve \$10. This lot has been donated back to be auctioned again.



AUSTRALIA



(28-11-51)



(9-4-52)



(20-5-52)

R.P. R10/1 Third Frame.
at Left.



All Wmkd. Crown C of A.

Lot 9 - set of three folders (scanned life size) commemorating the 2018 Exhibition, hosted by this society. Only 100 produced world-wide, had set of 1947 Newcastle stamps and P-stamps. Reserve \$5.

NEWCASTLE
PHILATELIC
SOCIETY



CENTENARY
1918 – 2018

Booklet No. 1

NEWCASTLE
PHILATELIC
SOCIETY



CENTENARY
1918 – 2018

Booklet No. 2

NEWCASTLE
PHILATELIC
SOCIETY



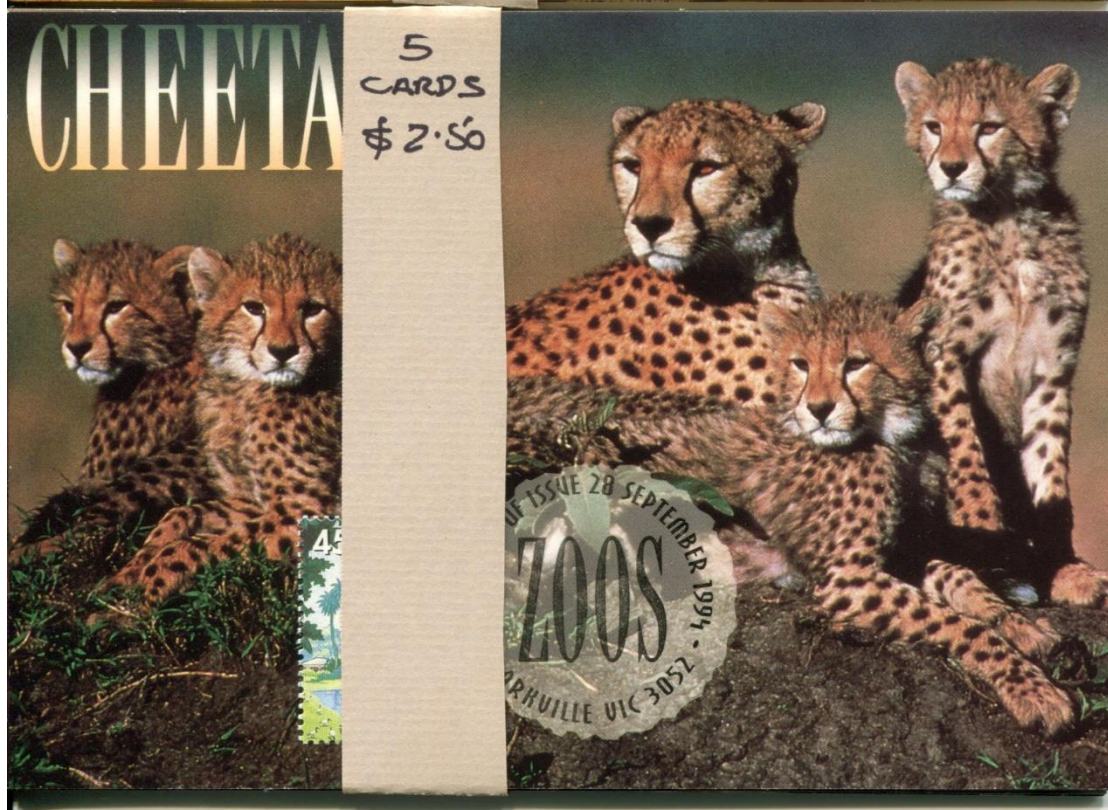
CENTENARY
1918 – 2018

Booklet No. 3

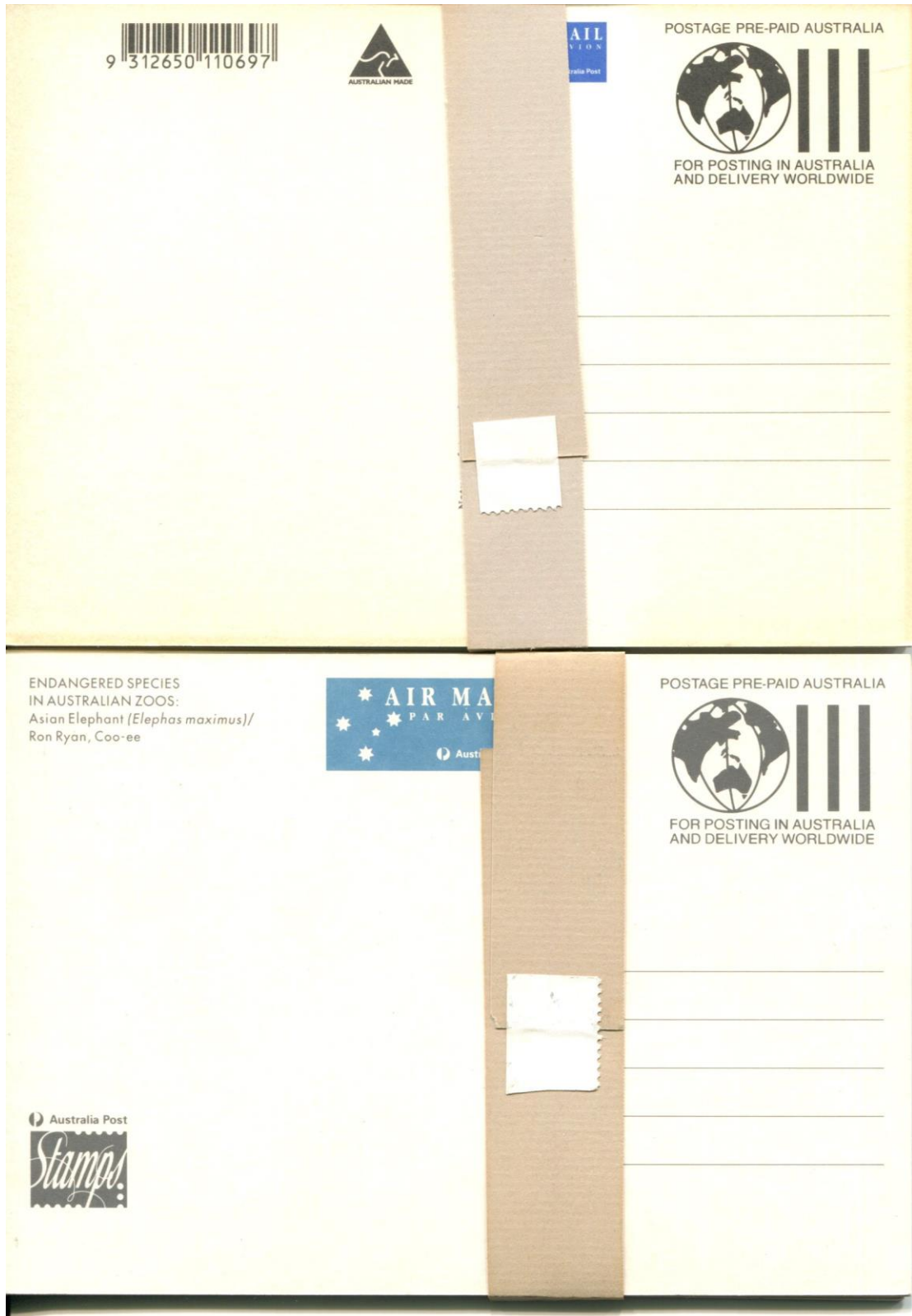
Lot 9, scan 2 - commemorative postcard with relevant cancel on the reverse.



Lot 10 - two sets of maxi cards, dated 1994 (top) and 1996 (bottom). Have paper band holding them together. Reverse shown on next page. Scans at actual size. Reserve \$2.



Lot 10, scan 2 - slight toning on reverse



9 312650 110697



AIR MAIL
Australia Post

POSTAGE PRE-PAID AUSTRALIA



FOR POSTING IN AUSTRALIA
AND DELIVERY WORLDWIDE

ENDANGERED SPECIES
IN AUSTRALIAN ZOOS:
Asian Elephant (*Elephas maximus*)/
Ron Ryan, Co-ee

AIR MAIL
PAR AVION
Australia Post

POSTAGE PRE-PAID AUSTRALIA



FOR POSTING IN AUSTRALIA
AND DELIVERY WORLDWIDE

Australia Post



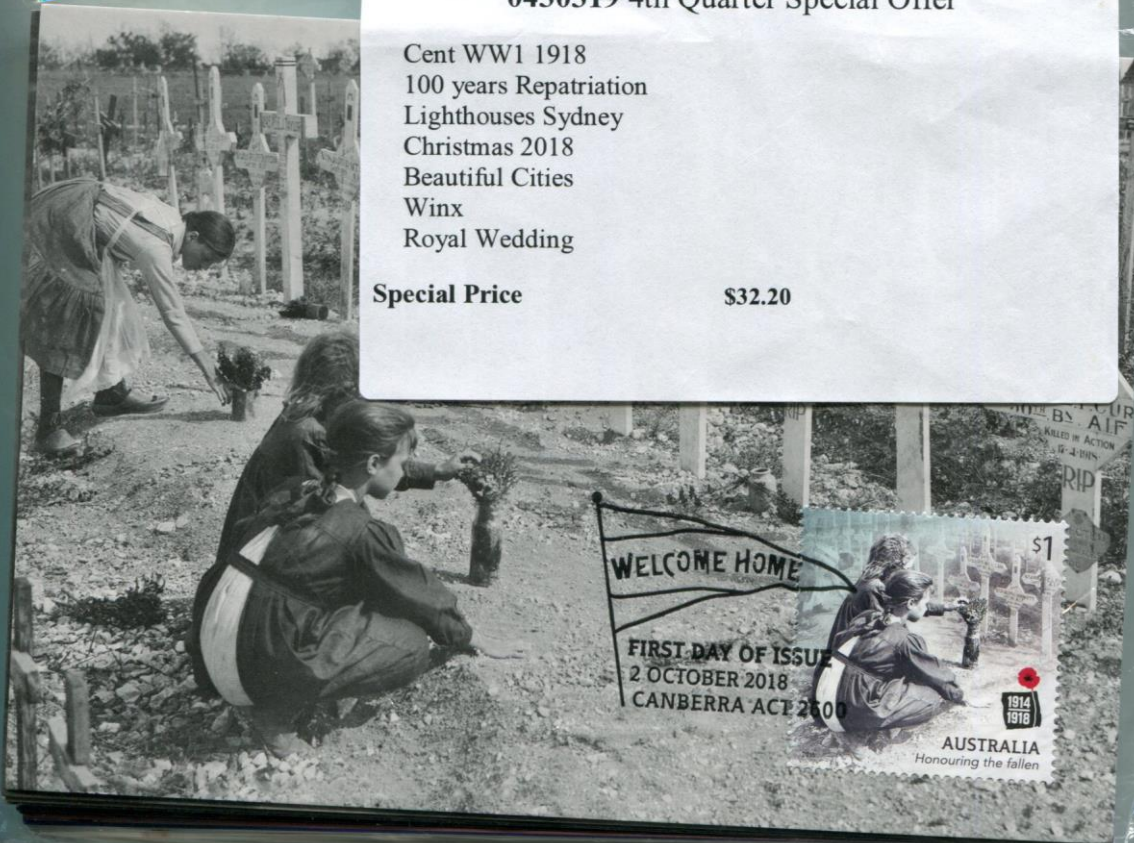
Lot 11 - two packs of maxi cards, for Henry Lawson stamp set and fourth quarter 2018 cards.
See label on bottom pack. Still in the original glassine sleeves. Reserve \$2



2018 Australia Maximum Cards
0430319 4th Quarter Special Offer

- Cent WW1 1918
- 100 years Repatriation
- Lighthouses Sydney
- Christmas 2018
- Beautiful Cities
- Winx
- Royal Wedding

Special Price \$32.20



Lot 11, scan 2 - reverse of the two stamp packs.

HENRY LAWSON: 1867-1922

MAXICARD IMAGES

- "THE DROVER'S WIFE"
- "MITCHELL: A CHARACTER SKETCH"

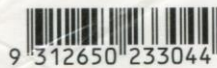
CONTAINS: SET OF TWO MAXICARDS

PRICE INCLUDES POSTAGE PAID IN AUSTRALIA AND DELIVERY WORLDWIDE

NOT FOR LONG-TERM STORAGE



RRP \$5.45



PAR AVION
AIR MAIL
INTERNATIONAL

POSTAGE PRE-PAID AUSTRALIA

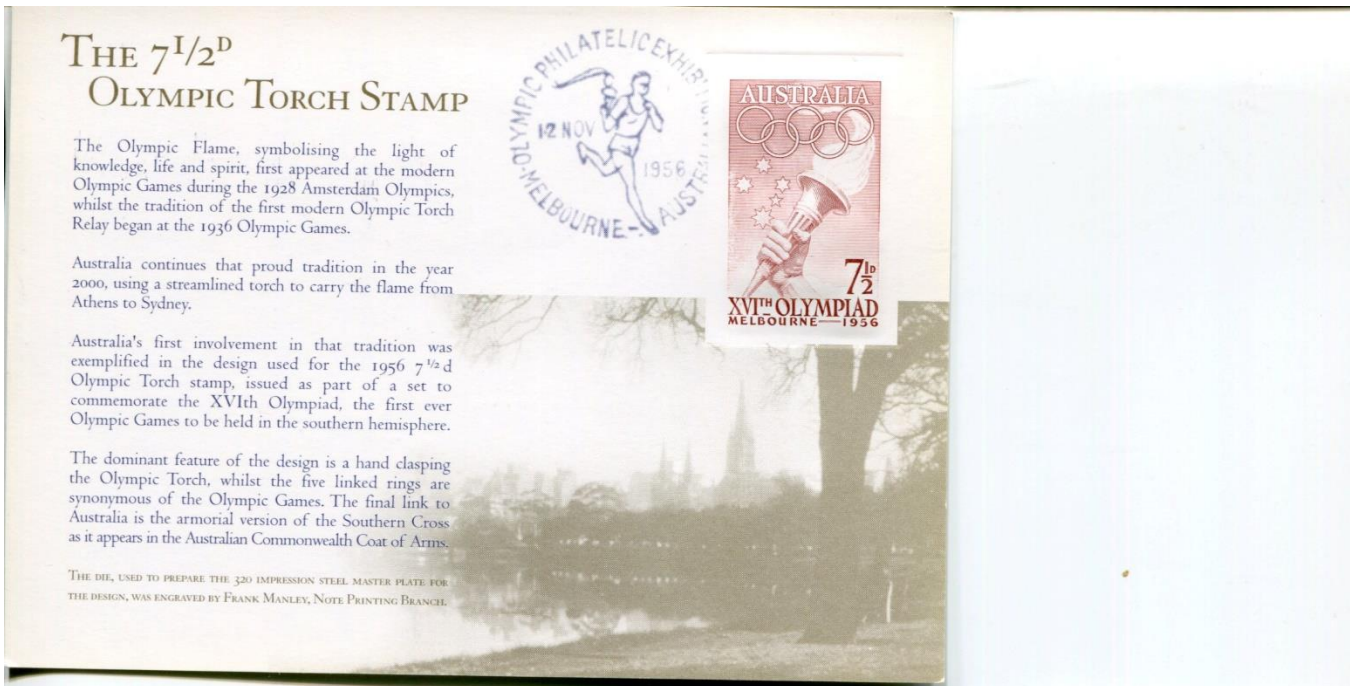
FOR POSTING
IN AUSTRALIA
AND DELIVERY
WORLDWIDE



Image: WPA Pool/Pool/Getty Images

Lot 12 - four miscellaneous souvenirs / cards, as shown on next three pages. Not often seen.

Reserve \$1







Send this free postcard to connect with someone you care about

No stamp required
Australia Post supported mail



Proudly supporting Beyond Blue



Australia Post acknowledges the Traditional Custodians of the land on which we operate, live and gather as a team. We recognise their continuing connection to land, water, and community. We pay respect to Elders past, present and emerging.



Australia Post

Lot 13 - Hagner sheet with a few KGV stamps, all have a Tasmanian postmark. Reserve \$2.

